

CMG1 antibody

Catalog No: #22421

Orders: order@signalwayantibody.comSupport: tech@signalwayantibody.com

Description

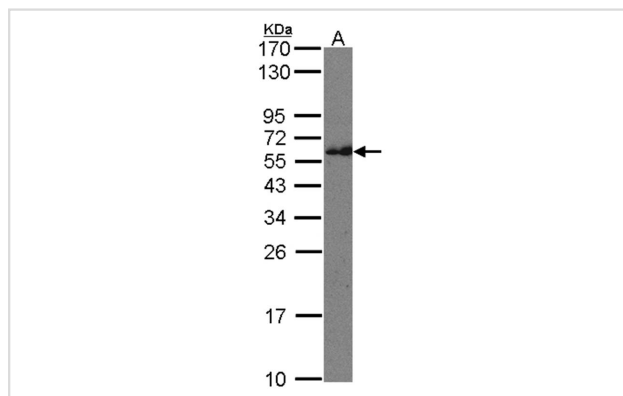
Product Name	CMG1 antibody
Host Species	Rabbit
Clonality	Polyclonal
Purification	Purified by antigen-affinity chromatography.
Applications	WB
Species Reactivity	Hu
Immunogen Type	Peptide
Immunogen Description	Synthetic peptide contain a sequence corresponding to a region within amino acids 538 and 600 of Human IFT74
Target Name	CMG1
Other Names	CMG1; CCDC2; CMG-1; FLJ22621; MGC111562
Accession No.	Swiss-Prot:Q96LB3Gene ID:80173
Uniprot	Q96LB3
GeneID	80173;
Concentration	0.4mg/ml
Formulation	Supplied in 0.1M Tris-buffered saline with 10% Glycerol (pH7.0). 0.01% Thimerosal was added as a preservative.
Storage	Store at -20°C for long term preservation (recommended). Store at 4°C for short term use.

Application Details

Predicted MW: 69kd

Western blotting: 1:500-1:3000

Images



Sample(30 ug of whole cell lysate)
A: Raji
12% SDS PAGE
Primary antibody diluted at 1: 500

Note: This product is for in vitro research use only