

Smac/DIABLO Antibody

Catalog No: #39330

Orders: order@signalwayantibody.comSupport: tech@signalwayantibody.com

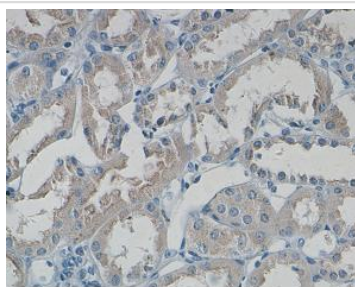
Description

Product Name	Smac/DIABLO Antibody
Host Species	Rabbit
Clonality	Polyclonal
Purification	Affinity purified
Applications	ELISA IHC
Species Reactivity	Hu
Immunogen Type	Peptide-KLH
Immunogen Description	Rabbit polyclonal Smac/DIABLO antibody was raised against a peptide from near the C terminal residues of human Smac/DIABLO protein.
Target Name	Smac/DIABLO
Concentration	1.0mg/ml
Formulation	PBS, pH 7.4 with 0.02% Sodium Azide
Storage	This product is stable for several weeks at 4°C as an undiluted liquid. Dilute only prior to immediate use. For extended storage, aliquot contents and freeze at -20°C or below. Avoid cycles of freezing and thawing. Expiration date is one (1) year from date of receipt.

Application Details

ELISA IHC

Images



Immunohistochemical staining of formalin-fixed paraffin-embedded kidney showing Cytoplasmic staining with anti-Smac antibody dilution: 1:100.

Note: This product is for in vitro research use only