

GEM antibody

Catalog No: #22426

Orders: order@signalwayantibody.comSupport: tech@signalwayantibody.com

Description

Product Name	GEM antibody
Host Species	Rabbit
Clonality	Polyclonal
Purification	Purified by antigen-affinity chromatography.
Applications	WB IHC
Species Reactivity	Hu
Immunogen Type	Peptide
Immunogen Description	Synthetic peptide contain a sequence corresponding to a region within amino acids 1 and 14 of Human GEM
Target Name	GEM
Accession No.	Swiss-Prot:P55040Gene ID:2669
Uniprot	P55040
GeneID	2669;
Concentration	1mg/ml
Formulation	Supplied in 0.1M Tris-buffered saline with 10% Glycerol (pH7.0). 0.01% Thimerosal was added as a preservative.
Storage	Store at -20°C for long term preservation (recommended). Store at 4°C for short term use.

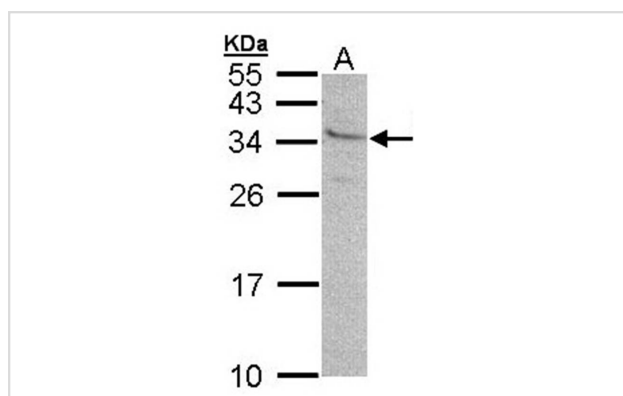
Application Details

Predicted MW: 34kd

Western blotting: 1:500-1:3000

Immunohistochemistry: 1:100-1:250

Images

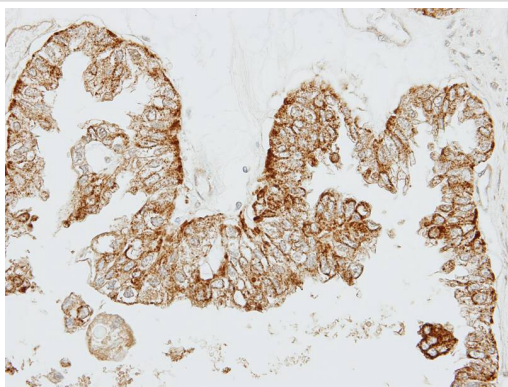


Sample (30 ug of whole cell lysate)

A: 293T

12% SDS PAGE

Primary antibody diluted at 1: 500



Immunohistochemical analysis of paraffin-embedded OVCA xenograft, using GEM antibody at 1: 100 dilution.

Background

The protein encoded by this gene belongs to the RAD/GEM family of GTP-binding proteins. It is associated with the inner face of the plasma membrane and could play a role as a regulatory protein in receptor-mediated signal transduction. Alternative splicing occurs at this locus and two transcript variants encoding the same protein have been identified. [provided by RefSeq]

Note: This product is for in vitro research use only