

## HLA-DMA antibody

Catalog No: #22427

Orders: order@signalwayantibody.com

Support: tech@signalwayantibody.com

## Description

Product Name	HLA-DMA antibody
Host Species	Rabbit
Clonality	Polyclonal
Purification	Purified by antigen-affinity chromatography.
Applications	WB IHC
Species Reactivity	Hu
Immunogen Type	Recombinant protein
Immunogen Description	Recombinant protein fragment contain a sequence corresponding to a region within amino acids 52 and 255 of HLA-DMA
Target Name	HLA-DMA
Accession No.	NCBI Gene ID: 3108NCBI mRNA#: BC011447NCBI Protein#: AAH11447
GeneID	3108;
Concentration	1mg/ml
Formulation	Supplied in 0.1M Tris-buffered saline with 20% Glycerol (pH7.0). 0.01% Thimerosal was added as a preservative.
Storage	Store at -20°C for long term preservation (recommended). Store at 4°C for short term use.

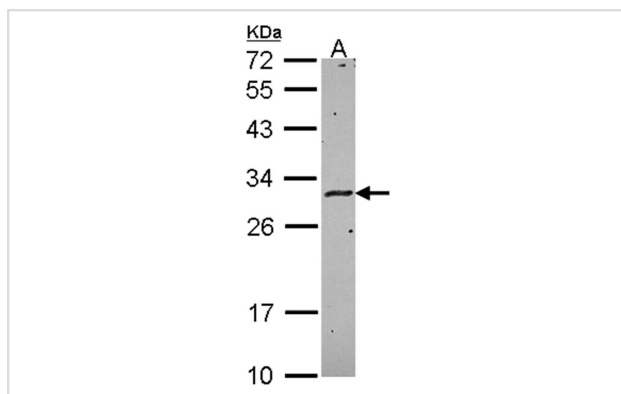
## Application Details

Predicted MW: 29kd

Western blotting: 1:500-1:3000

Immunohistochemistry: 1:100-1:250

## Images

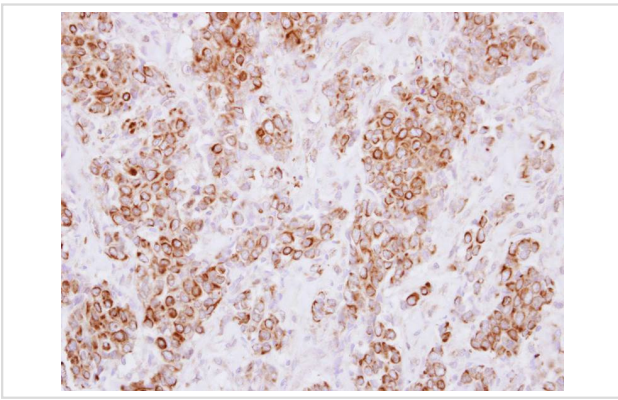


Sample (30 ug of whole cell lysate)

A: HeLa

12% SDS PAGE

Primary antibody diluted at 1: 1000



Immunohistochemical analysis of paraffin-embedded Breast ca, using HLA-DMA antibody at 1: 250 dilution.

## Background

HLA-DMA belongs to the HLA class II alpha chain paralogues. This class II molecule is a heterodimer consisting of an alpha (DMA) and a beta chain (DMB), both anchored in the membrane. It is located in intracellular vesicles. DM plays a central role in the peptide loading of MHC class II molecules by helping to release the CLIP molecule from the peptide binding site. Class II molecules are expressed in antigen presenting cells (APC: B lymphocytes, dendritic cells, macrophages). The alpha chain is approximately 33-35 kDa and its gene contains 5 exons. Exon one encodes the leader peptide, exons 2 and 3 encode the two extracellular domains, exon 4 encodes the transmembrane domain and the cytoplasmic tail. [provided by RefSeq]

Note: This product is for in vitro research use only