

Liprin alpha 1 antibody

Catalog No: #22432



Orders: [order@signalwayantibody.com](mailto:order@signalwayantibody.com)  
Support: [tech@signalwayantibody.com](mailto:tech@signalwayantibody.com)

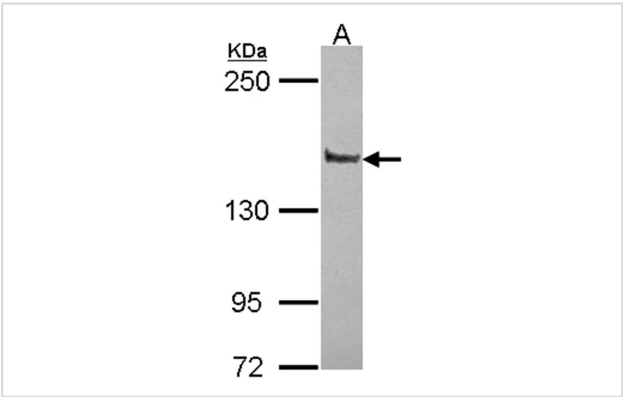
Description

Product Name	Liprin alpha 1 antibody
Host Species	Rabbit
Clonality	Polyclonal
Purification	Purified by antigen-affinity chromatography.
Applications	WB IF
Species Reactivity	Hu
Immunogen Type	Recombinant protein
Immunogen Description	Recombinant protein fragment contain a sequence corresponding to a region within amino acids 18 and 247 of Liprin alpha 1
Target Name	Liprin alpha 1
Accession No.	Swiss-Prot:Q13136Gene ID:8500
Uniprot	Q13136
GeneID	8500;
Concentration	1mg/ml
Formulation	Supplied in 0.1M Tris-buffered saline with 20% Glycerol (pH7.0). 0.01% Thimerosal was added as a preservative.
Storage	Store at -20°C for long term preservation (recommended). Store at 4°C for short term use.

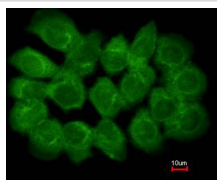
Application Details

Predicted MW: 136kd  
Western blotting: 1:500-1:3000  
Immunofluorescence: 1:100-1:200

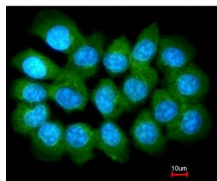
Images



Sample (30 ug of whole cell lysate)  
A: JurKat  
5% SDS PAGE  
Primary antibody diluted at 1: 10000



Costained with Hoechst 33342



Immunofluorescence analysis of methanol-fixed A431, using Liprin alpha 1 antibody at 1: 200 dilution.

## Background

The protein encoded by this gene is a member of the LAR protein-tyrosine phosphatase-interacting protein (liprin) family. Liprins interact with members of LAR family of transmembrane protein tyrosine phosphatases, which are known to be important for axon guidance and mammary gland development. This protein binds to the intracellular membrane-distal phosphatase domain of tyrosine phosphatase LAR, and appears to localize LAR to cell focal adhesions. This interaction may regulate the disassembly of focal adhesion and thus help orchestrate cell-matrix interactions. Alternatively spliced transcript variants encoding distinct isoforms have been described. [provided by RefSeq]

Note: This product is for in vitro research use only