

KLRG1 antibody

Catalog No: #22436

Orders: order@signalwayantibody.comSupport: tech@signalwayantibody.com

Description

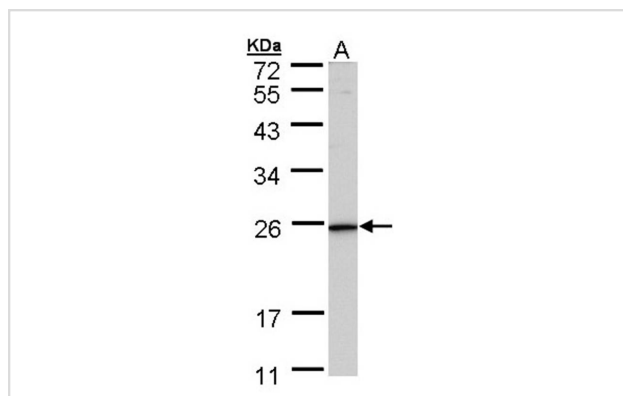
Product Name	KLRG1 antibody
Host Species	Rabbit
Clonality	Polyclonal
Purification	Purified by antigen-affinity chromatography.
Applications	WB
Species Reactivity	Hu
Immunogen Type	Recombinant protein
Immunogen Description	Recombinant protein fragment contain a sequence corresponding to a region within amino acids 1 and 184 of Human KLRG1
Target Name	KLRG1
Accession No.	Swiss-Prot:Q96E93Gene ID:10219
Uniprot	Q96E93
GeneID	10219;
Concentration	1mg/ml
Formulation	Supplied in 0.1M Tris-buffered saline with 10% Glycerol (pH7.0). 0.01% Thimerosal was added as a preservative.
Storage	Store at -20°C for long term preservation (recommended). Store at 4°C for short term use.

Application Details

Predicted MW: 21kd

Western blotting: 1:500-1:3000

Images



Sample (30 ug of whole cell lysate)
A: HeLa
12% SDS PAGE
Primary antibody diluted at 1: 1000

Background

Natural killer (NK) cells are lymphocytes that can mediate lysis of certain tumor cells and virus-infected cells without previous activation. They can also regulate specific humoral and cell-mediated immunity. The protein encoded by this gene belongs to the killer cell lectin-like receptor (KLR) family,

which is a group of transmembrane proteins preferentially expressed in NK cells. Studies in mice suggested that the expression of this gene may be regulated by MHC class I molecules. Alternatively spliced transcript variants have been reported, but their full-length natures have not yet been determined. [provided by RefSeq]

Note: This product is for in vitro research use only