

MEL-1A-R antibody

Catalog No: #22438

Orders: order@signalwayantibody.comSupport: tech@signalwayantibody.com

Description

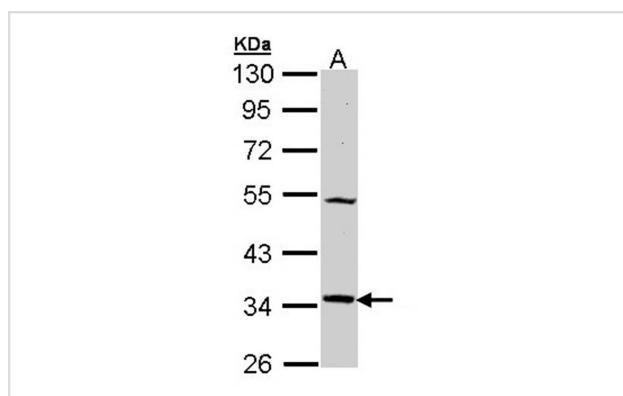
Product Name	MEL-1A-R antibody
Host Species	Rabbit
Clonality	Polyclonal
Purification	Purified by antigen-affinity chromatography.
Applications	WB
Species Reactivity	Hu
Immunogen Type	Peptide
Immunogen Description	Synthetic peptide contain a sequence corresponding to a region within amino acids 80 and 142 of Human MTNR1A
Target Name	MEL-1A-R
Accession No.	Swiss-Prot:P48039Gene ID:4543
Uniprot	P48039
GeneID	4543;
Concentration	1mg/ml
Formulation	Supplied in 0.1M Tris-buffered saline with 10% Glycerol (pH7.0). 0.01% Thimerosal was added as a preservative.
Storage	Store at -20°C for long term preservation (recommended). Store at 4°C for short term use.

Application Details

Predicted MW: 39kd

Western blotting: 1:500-1:3000

Images



Sample (30 ug of whole cell lysate)

A: Raji

10% SDS PAGE

Primary antibody diluted at 1: 1000

Background

This gene encodes one of two high affinity forms of a receptor for melatonin, the primary hormone secreted by the pineal gland. This receptor is a G-protein coupled, 7-transmembrane receptor that is responsible for melatonin effects on mammalian circadian rhythm and reproductive alterations

affected by day length. The receptor is an integral membrane protein that is readily detectable and localized to two specific regions of the brain. The hypothalamic suprachiasmatic nucleus appears to be involved in circadian rhythm while the hypophyseal pars tuberalis may be responsible for the reproductive effects of melatonin. [provided by RefSeq]

Note: This product is for in vitro research use only