

CDC37L1 antibody

Catalog No: #22445

Orders: order@signalwayantibody.comSupport: tech@signalwayantibody.com

Description

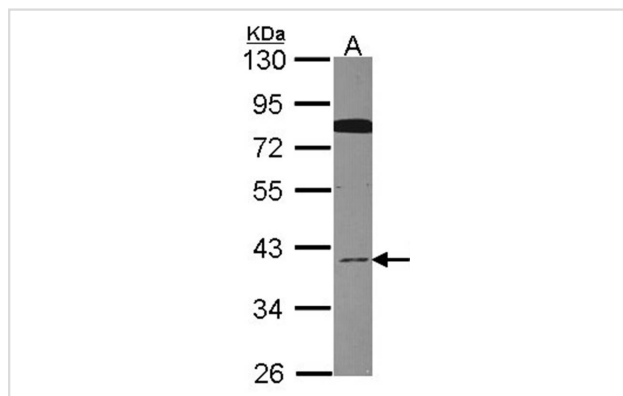
Product Name	CDC37L1 antibody
Host Species	Rabbit
Clonality	Polyclonal
Purification	Purified by antigen-affinity chromatography.
Applications	WB
Species Reactivity	Hu
Immunogen Type	Peptide
Immunogen Description	Synthetic peptide contain a sequence corresponding to a region within amino acids 275 and 287 (Q7L3B6) of CDC37L1
Target Name	CDC37L1
Other Names	HARC; CDC37B; FLJ20639; RP11-6J24.5
Accession No.	Swiss-Prot:Q7L3B6Gene ID:55664
Uniprot	Q7L3B6
GeneID	55664;
Concentration	0.6mg/ml
Formulation	Supplied in 0.1M Tris-buffered saline with 10% Glycerol (pH7.0). 0.01% Thimerosal was added as a preservative.
Storage	Store at -20°C for long term preservation (recommended). Store at 4°C for short term use.

Application Details

Predicted MW: 39kd

Western blotting: 1:500-1:3000

Images



Sample (30 ug of whole cell lysate)
A: HeLa
10% SDS PAGE
Primary antibody diluted at 1: 1000

Background

CDC37L1 is a cytoplasmic phosphoprotein that exists in complex with HSP90 (HSPCA; MIM 140571) as well as several other proteins involved in

Note: This product is for in vitro research use only