

## ACAP1 antibody

Catalog No: #22446

Orders: [order@signalwayantibody.com](mailto:order@signalwayantibody.com)Support: [tech@signalwayantibody.com](mailto:tech@signalwayantibody.com)

## Description

Product Name	ACAP1 antibody
Host Species	Rabbit
Clonality	Polyclonal
Purification	Purified by antigen-affinity chromatography.
Applications	WB IF
Species Reactivity	Hu
Immunogen Type	Peptide
Immunogen Description	Synthetic peptide contain a sequence corresponding to a region within amino acids 678 and 740 of Human CENTB1
Target Name	ACAP1
Accession No.	NCBI Gene ID: 9744NCBI mRNA#: NM_014716NCBI Protein#: NP_055531
Uniprot	Q15027
GeneID	9744;
Concentration	1mg/ml
Formulation	Supplied in 0.1M Tris-buffered saline with 10% Glycerol (pH7.0). 0.01% Thimerosal was added as a preservative.
Storage	Store at -20°C for long term preservation (recommended). Store at 4°C for short term use.

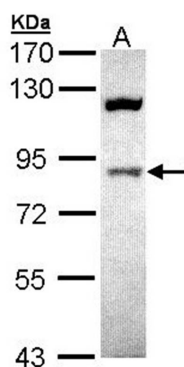
## Application Details

Predicted MW: 82kd

Western blotting: 1:500-1:3000

Immunofluorescence: 1:100-1:200

## Images

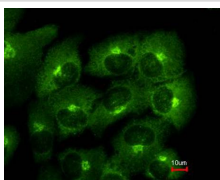


Sample (30 ug of whole cell lysate)

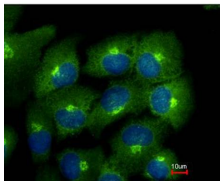
A: Raji

7.5% SDS PAGE

Primary antibody diluted at 1: 1000



Costained with Hoechst 33342



Immunofluorescence analysis of methanol-fixed H1299, using Centaurin beta 1 antibody at 1: 500 dilution.

Note: This product is for in vitro research use only