

HPS3 antibody

Catalog No: #22451



Orders: [order@signalwayantibody.com](mailto:order@signalwayantibody.com)  
Support: [tech@signalwayantibody.com](mailto:tech@signalwayantibody.com)

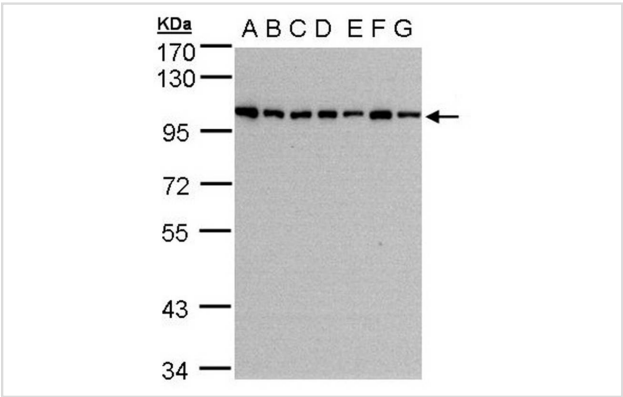
Description

Product Name	HPS3 antibody
Host Species	Rabbit
Clonality	Polyclonal
Purification	Purified by antigen-affinity chromatography.
Applications	WB IHC
Species Reactivity	Hu
Immunogen Type	Peptide
Immunogen Description	Synthetic peptide contain a sequence corresponding to a region within amino acids 942 and 1004 of Human HPS3
Target Name	HPS3
Accession No.	Swiss-Prot:Q969F9Gene ID:84343
Uniprot	Q969F9
GeneID	84343;
Concentration	0.9mg/ml
Formulation	Supplied in 0.1M Tris-buffered saline with 10% Glycerol (pH7.0). 0.01% Thimerosal was added as a preservative.
Storage	Store at -20°C for long term preservation (recommended). Store at 4°C for short term use.

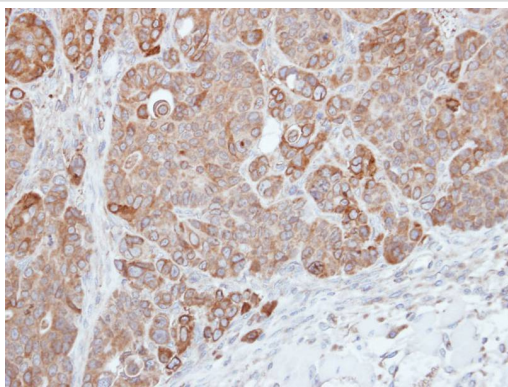
Application Details

Predicted MW: 114kd
Western blotting: 1:500-1:3000
Immunohistochemistry: 1:50-1:500

Images



Sample(30 ug of whole cell lysate)  
A: 293T  
B: A431  
C: H1299  
D: HeLa S3  
E: Hep G2  
F: MOLT4  
G: Raji  
7.5% SDS PAGE  
Primary antibody diluted at 1: 1000



Immunohistochemical analysis of paraffin-embedded SW480 xenograft, using HPS3 antibody at 1: 500 dilution.

## Background

This gene encodes a protein containing a potential clathrin-binding motif, consensus dileucine signals, and tyrosine-based sorting signals for targeting to vesicles of lysosomal lineage. The encoded protein may play a role in organelle biogenesis associated with melanosomes, platelet dense granules, and lysosomes. Mutations in this gene are associated with Hermansky-Pudlak syndrome type 3. Alternate splice variants exist, but their full length sequence has not been determined. [provided by RefSeq]

Note: This product is for in vitro research use only