

MRPP3 Antibody

Catalog No: #39698



Orders: order@signalwayantibody.com
Support: tech@signalwayantibody.com

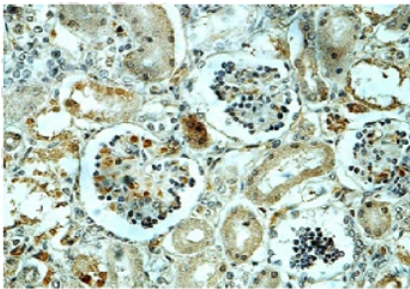
Description

Product Name	MRPP3 Antibody
Host Species	Rabbit
Clonality	Polyclonal
Purification	Affinity purified
Applications	ELISA WB IHC
Species Reactivity	Hu Rt Ms
Immunogen Type	Recombinant Protein
Immunogen Description	raised against a recombinant human MRPP3 protein 375-542bp (BC032221).
Target Name	MRPP3
Concentration	1.0mg/ml
Formulation	PBS, pH 7.4 with 0.02% Sodium Azide
Storage	This product is stable for several weeks at 4°C as an undiluted liquid. Dilute only prior to immediate use. For extended storage, aliquot contents and freeze at -20°C or below. Avoid cycles of freezing and thawing. Expiration date is one (1) year from date of receipt.

Application Details

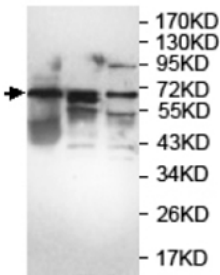
ELISA WB IHC

Images



Immunohistochemical staining of formalin-fixed paraffin-embedded fetal kidney showing cytoplasmic staining with anti-MRPP3 antibody at a dilution of 1/100.

fetal kidney K562 PG49



Western Blot analysis of K562, MCF-7 cell Lysate and fetal kidney lysate with anti-MRPP3 antibody

WB:1:1,000

Note: This product is for in vitro research use only