

TCP-1 beta antibody

Catalog No: #22463

Orders: order@signalwayantibody.comSupport: tech@signalwayantibody.com

Description

Product Name	TCP-1 beta antibody
Host Species	Rabbit
Clonality	Polyclonal
Purification	Purified by antigen-affinity chromatography.
Applications	WB IHC
Species Reactivity	Hu
Immunogen Type	Recombinant protein
Immunogen Description	Recombinant protein fragment contain a sequence corresponding to a region within amino acids 277 and 473 of Human CCT2
Target Name	TCP-1 beta
Accession No.	Swiss-Prot:P78371Gene ID:10576
Uniprot	P78371
GeneID	10576;
Concentration	1mg/ml
Formulation	Supplied in 0.1M Tris-buffered saline with 10% Glycerol (pH7.0). 0.01% Thimerosal was added as a preservative.
Storage	Store at -20°C for long term preservation (recommended). Store at 4°C for short term use.

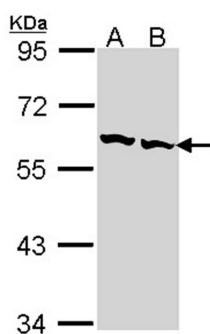
Application Details

Predicted MW: 58kd

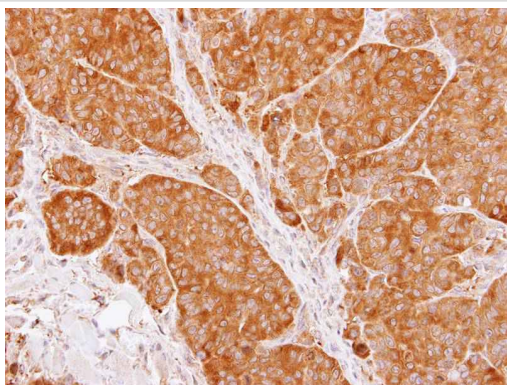
Western blotting: 1:500-1:3000

Immunohistochemistry: 1:100-1:250

Images



Sample (30 ug of whole cell lysate)
A: Hep G2
B: Raji
7.5% SDS PAGE
Primary antibody diluted at 1: 1000



Immunohistochemical analysis of paraffin-embedded SW480 xenograft, using TCP1 beta antibody at 1: 100 dilution.

Background

This gene encodes a molecular chaperone that is member of the chaperonin containing TCP1 complex (CCT), also known as the TCP1 ring complex (TRiC). This complex consists of two identical stacked rings, each containing eight different proteins. Unfolded polypeptides enter the central cavity of the complex and are folded in an ATP-dependent manner. The complex folds various proteins, including actin and tubulin. Alternate transcriptional splice variants of the gene described in this record have been observed but have not been thoroughly characterized. [provided by RefSeq]

Note: This product is for in vitro research use only