

## EDG6 antibody

Catalog No: #22466

Orders: [order@signalwayantibody.com](mailto:order@signalwayantibody.com)Support: [tech@signalwayantibody.com](mailto:tech@signalwayantibody.com)

## Description

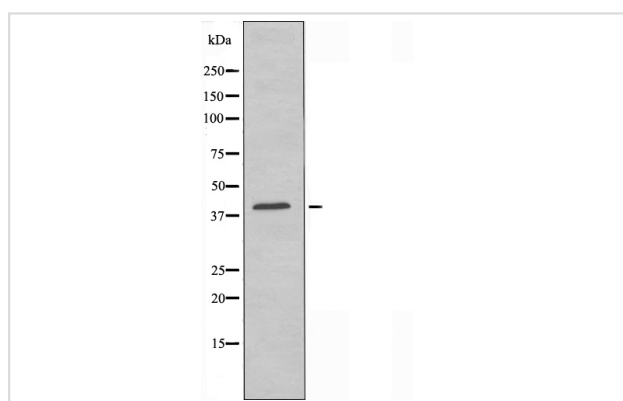
Product Name	EDG6 antibody
Host Species	Rabbit
Clonality	Polyclonal
Purification	Purified by antigen-affinity chromatography.
Applications	WB
Species Reactivity	Hu Ms
Immunogen Type	Peptide
Immunogen Description	A synthesized peptide derived from human EDG6
Target Name	EDG6
Other Names	EDG6; LPC1; S1P4; SLP4
Accession No.	NCBI Gene ID: 8698NCBI mRNA#: NM_003775NCBI Protein#: NP_003766
Uniprot	O95977
GeneID	8698;
Formulation	Rabbit IgG in phosphate buffered saline , pH 7.4, 150mM NaCl, 0.02% sodium azide and 50% glycerol.
Storage	Store at -20°C for long term preservation (recommended). Store at 4°C for short term use.

## Application Details

Predicted MW: 42kd

Western blotting: 1:500-1:1000

## Images



Western blot analysis of extracts from K562 cells, using EDG6 antibody.

## Background

This gene is a member of the endothelial differentiation, G-protein-coupled (EDG)) receptor gene family. EDG receptors bind lysophospholipids or lysophingolipids as ligands, and are involved in cell signalling in many different cell types. This EDG receptor gene is intronless and is specifically expressed in the lymphoid tissue. [provided by RefSeq]

---

Note: This product is for in vitro research use only