

# RanBP16 antibody

Catalog No: #22470



Orders: [order@signalwayantibody.com](mailto:order@signalwayantibody.com)  
Support: [tech@signalwayantibody.com](mailto:tech@signalwayantibody.com)

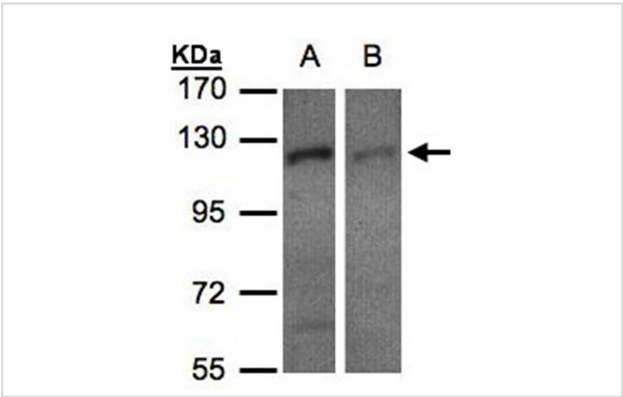
## Description

Product Name	RanBP16 antibody
Host Species	Rabbit
Clonality	Polyclonal
Purification	Purified by antigen-affinity chromatography.
Applications	WB IHC
Species Reactivity	Hu
Immunogen Type	Recombinant protein
Immunogen Description	Recombinant protein fragment contain a sequence corresponding to a region within amino acids 902 and 1082 of Human XPO7
Target Name	RanBP16
Accession No.	Swiss-Prot:Q9UIA9Gene ID:23039
Uniprot	Q9UIA9
GeneID	23039;
Concentration	0.9mg/ml
Formulation	Supplied in 0.1M Tris-buffered saline with 10% Glycerol (pH7.0). 0.01% Thimerosal was added as a preservative.
Storage	Store at -20°C for long term preservation (recommended). Store at 4°C for short term use.

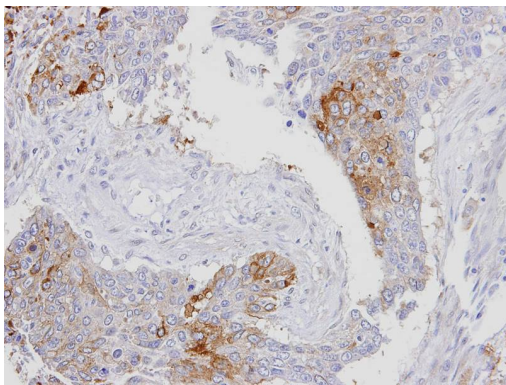
## Application Details

Predicted MW: 124kd  
Western blotting: 1:500-1:3000  
Immunohistochemistry: 1:100-1:250

## Images



Sample(30 ug of whole cell lysate)  
A: H1299  
B: HeLa S3  
7.5% SDS PAGE  
Primary antibody diluted at 1: 500



Immunohistochemical analysis of paraffin-embedded lung SCC, using RanBP16 antibody at 1: 100 dilution.

## Background

The transport of protein and large RNAs through the nuclear pore complexes (NPC) is an energy-dependent and regulated process. The import of proteins with a nuclear localization signal (NLS) is accomplished by recognition of one or more clusters of basic amino acids by the importin-alpha/beta complex; see MIM 600685 and MIM 602738. The small GTPase RAN (MIM 601179) plays a key role in NLS-dependent protein import. RAN-binding protein-16 is a member of the importin-beta superfamily of nuclear transport receptors.[supplied by OMIM]

Note: This product is for in vitro research use only