

PON3 Antibody

Catalog No: #39919

Orders: order@signalwayantibody.comSupport: tech@signalwayantibody.com

Description

Product Name	PON3 Antibody
Host Species	Rabbit
Clonality	Polyclonal
Purification	The antibody was affinity-purified from rabbit antiserum by affinity-chromatography using epitope-specific immunogen.
Applications	ELISA WB IHC
Species Reactivity	Hu Ms Rt
Immunogen Type	Peptide
Immunogen Description	Synthesized peptide derived from part region of human protein
Target Name	PON3
Concentration	1.0mg/ml
Formulation	Liquid in PBS containing 50% glycerol, and 0.02% sodium azide.
Storage	This product is stable for several weeks at 4°C as an undiluted liquid. Dilute only prior to immediate use. For extended storage, aliquot contents and freeze at -20°C or below. Avoid cycles of freezing and thawing. Expiration date is one (1) year from date of receipt.

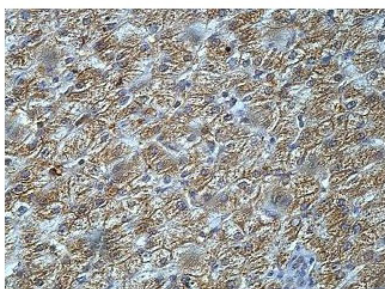
Application Details

WB 1:500-1:2000;

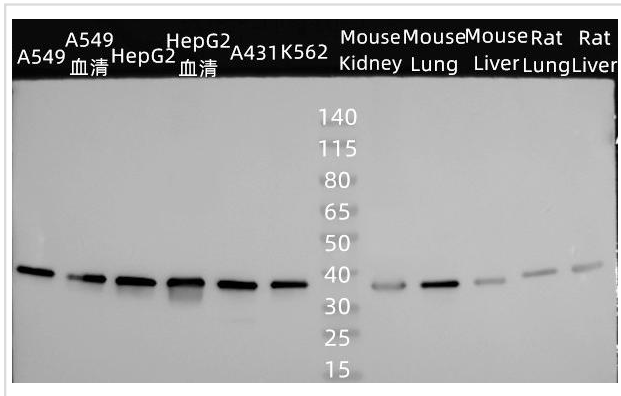
IHC 1:50-1:200;

ELISA 1:5000-1:20000

Images



Immunohistochemical staining of formalin-fixed paraffin-embedded fetal liver staining with anti-PON3 antibody at a dilution of 1/100



Western blot analysis of lysates, primary antibody was diluted at 1:500, 4° over night

Note: This product is for in vitro research use only