

PSCDBP antibody

Catalog No: #22488

Orders: order@signalwayantibody.comSupport: tech@signalwayantibody.com

Description

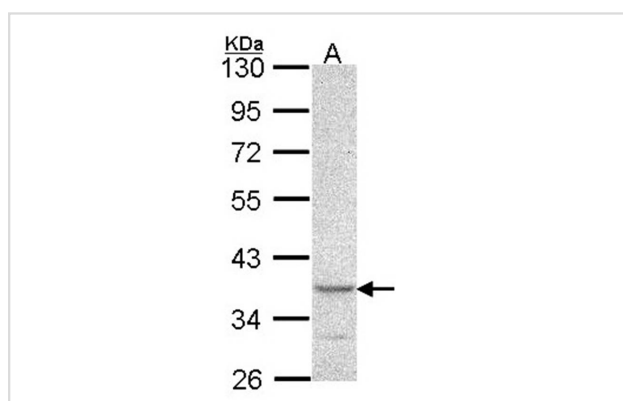
Product Name	PSCDBP antibody
Host Species	Rabbit
Clonality	Polyclonal
Purification	Purified by antigen-affinity chromatography.
Applications	WB
Species Reactivity	Hu
Immunogen Type	Peptide
Immunogen Description	Synthetic peptide contain a sequence corresponding to a region within amino acids 1 and 14 of PSCDBP
Target Name	PSCDBP
Accession No.	Swiss-Prot:O60759Gene ID:9595
Uniprot	O60759
GeneID	9595;
Concentration	0.5mg/ml
Formulation	Supplied in 1XPBS, 10% Glycerol (pH7.0). 0.01% Thimerosal was added as a preservative.
Storage	Store at -20°C for long term preservation (recommended). Store at 4°C for short term use.

Application Details

Predicted MW: 40kd

Western blotting: 1:500-1:3000

Images



Sample (30 ug of whole cell lysate)

A: A549

10% SDS PAGE

Primary antibody diluted at 1: 1000

Background

The protein encoded by this gene contains 2 leucine zipper domains and a putative C-terminal nuclear targeting signal, but does not have any hydrophobic regions. This protein is expressed weakly in resting NK and T cells. The encoded protein modulates the activation of ARF genes by CYTH1. This protein interacts with CYTH1 and SNX27 proteins and may act to sequester CYTH1 protein in the cytoplasm.[provided by RefSeq]

Note: This product is for in vitro research use only