

WDSOF1 Antibody

Catalog No: #39961

Orders: order@signalwayantibody.comSupport: tech@signalwayantibody.com

Description

Product Name	WDSOF1 Antibody
Host Species	Rabbit
Clonality	Polyclonal
Purification	Affinity purified
Applications	ELISA WB IHC
Species Reactivity	Hu Rt Ms
Immunogen Type	Recombinant Protein
Immunogen Description	Rabbit polyclonal WDSOF1(1) antibody was raised against a recombinant human WDSOF1 protein 245-440aa (BC026067).
Target Name	WDSOF1
Concentration	1.0mg/ml
Formulation	PBS, pH 7.4 with 0.02% sodium azide.
Storage	This product is stable for several weeks at 4°C as an undiluted liquid. Dilute only prior to immediate use. For extended storage, aliquot contents and freeze at -20°C or below. Avoid cycles of freezing and thawing. Expiration date is one (1) year from date of receipt.

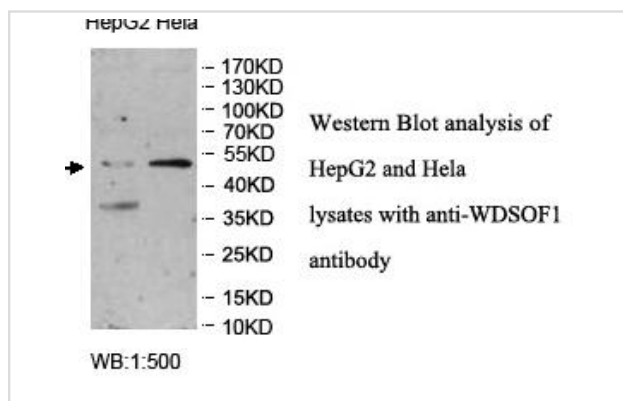
Application Details

ELISA: 1:20000-1:80000 WB: 1:200-1:1000 IHC: 1:100-1:500

Images



Immunohistochemical staining of formalin-fixed paraffin-embedded fetal brain showing nucleus staining with anti-WDSOF1 antibody at a dilution of 1/100



Note: This product is for in vitro research use only