

RGS14 antibody

Catalog No: #22500

Orders: order@signalwayantibody.comSupport: tech@signalwayantibody.com

Description

Product Name	RGS14 antibody
Host Species	Rabbit
Clonality	Polyclonal
Purification	Purified by antigen-affinity chromatography.
Applications	WB IHC
Species Reactivity	Hu
Immunogen Type	Peptide
Immunogen Description	Synthetic peptide contain a sequence corresponding to a region within amino acids 504 and 566 of Human RGS14
Target Name	RGS14
Accession No.	Swiss-Prot:O43566Gene ID:10636
Uniprot	O43566
GeneID	10636;
Concentration	0.9mg/ml
Formulation	Supplied in 0.1M Tris-buffered saline with 10% Glycerol (pH7.0). 0.01% Thimerosal was added as a preservative.
Storage	Store at -20°C for long term preservation (recommended). Store at 4°C for short term use.

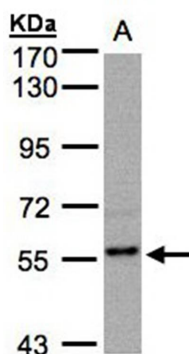
Application Details

Predicted MW: 61kd

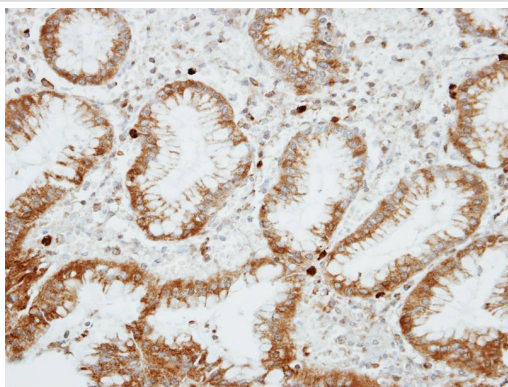
Western blotting: 1:500-1:3000

Immunohistochemistry: 1:100-1:250

Images



Sample (30ug whole cell lysate)
A: MOLT4
7.5% SDS PAGE
Primary antibody diluted at 1: 500



Immunohistochemical analysis of paraffin-embedded GASTRIC CA, using RGS14 antibody at 1: 100 dilution.

Background

This gene encodes a member of the regulator of G-protein signaling family. This protein contains one RGS domain, two Raf-like Ras-binding domains (RBDs), and one GoLoco domain. The protein attenuates the signaling activity of G-proteins by binding, through its GoLoco domain, to specific types of activated, GTP-bound G alpha subunits. Acting as a GTPase activating protein (GAP), the protein increases the rate of conversion of the GTP to GDP. This hydrolysis allows the G alpha subunits to bind G beta/gamma subunit heterodimers, forming inactive G-protein heterotrimers, thereby terminating the signal. Alternate transcriptional splice variants of this gene have been observed but have not been thoroughly characterized. [provided by RefSeq]

Note: This product is for in vitro research use only