

RNF11 Antibody

Catalog No: #40081

Orders: order@signalwayantibody.comSupport: tech@signalwayantibody.com

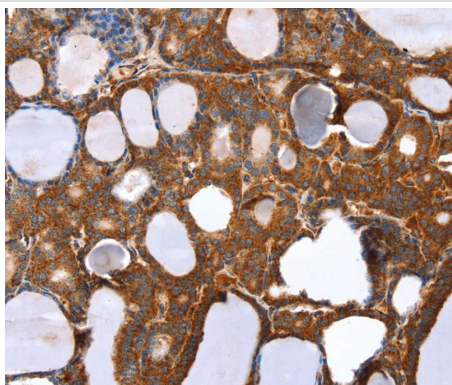
Description

| | |
|-----------------------|---|
| Product Name | RNF11 Antibody |
| Host Species | Rabbit |
| Clonality | Polyclonal |
| Purification | Antigen affinity purification. |
| Applications | IHC |
| Species Reactivity | Hu |
| Specificity | The antibody detects endogenous levels of total RNF11 protein. |
| Immunogen Type | Protein |
| Immunogen Description | Full length fusion protein |
| Target Name | RNF11 |
| Other Names | CGI-123; SID1669 |
| Accession No. | Swiss-Prot:Q9Y3C5Gene Accssion:BC020964 |
| Uniprot | Q9Y3C5 |
| GeneID | 26994; |
| Concentration | 1.2mg/ml |
| Formulation | Rabbit IgG in pH7.4 PBS, 0.05% NaN ₃ , 40% Glycerol. |
| Storage | Store at -20°C |

Application Details

Immunohistochemistry:1:25-1:100

Images



Immunohistochemical analysis of paraffin-embedded Human thyroid cancer tissue using #40081 at dilution 1/20.

Background

The protein encoded by this gene contains a RING-H2 finger motif, which is known to be important for protein-protein interactions. The expression of this gene has been shown to be induced by mutant RET proteins (MEN2A/MEN2B). The germline mutations in RET gene are known to be responsible for the development of multiple endocrine neoplasia (MEN).

Note: This product is for in vitro research use only