

ROBO4 Antibody

Catalog No: #40084

Orders: order@signalwayantibody.comSupport: tech@signalwayantibody.com

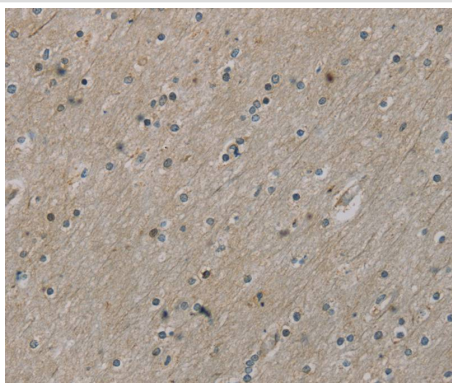
Description

Product Name	ROBO4 Antibody
Host Species	Rabbit
Clonality	Polyclonal
Purification	Antigen affinity purification.
Applications	IHC
Species Reactivity	Hu
Specificity	The antibody detects endogenous levels of total ROBO4 protein.
Immunogen Type	Protein
Immunogen Description	Fusion protein corresponding to residues near the C terminal of human roundabout, axon guidance receptor, homolog 4 (Drosophila)
Target Name	ROBO4
Other Names	MRB; ECSM4
Accession No.	Swiss-Prot:Q8WZ75Gene Accssion:BC111562
Uniprot	Q8WZ75
GeneID	54538;
Concentration	1.4mg/ml
Formulation	Rabbit IgG in pH7.4 PBS, 0.05% NaN ₃ , 40% Glycerol.
Storage	Store at -20°C

Application Details

Immunohistochemistry:1:25-1:100

Images



Immunohistochemical analysis of paraffin-embedded Human brain tissue using #40084 at dilution 1/25.

Background

Robo4 (roundabout homolog 4 or magic roundabout) is a receptor for Slit proteins which implicate in angiogenesis and vascular patterning especially through facilitating inhibition of primary endothelial cell migration. It is a fairly recently identified member of Robo family and is shorter than other Robo

members at both intracellular as well as extracellular domains. Robo4 plays important roles in several aspects of vascular development such as the guidance of endothelial cell migration, cell cycle regulation, inhibition of pathologic angiogenesis and endothelial hyperpermeability etc. Employing mouse and zebrafish models, Slit2/Robo4 interactions have been shown to maintain integrity of vascular network and its barrier function by inhibiting cytokine-mediated vasculogenesis with enhanced permeability, and that Slit2-Robo4-paxillin-GIT1 network inhibits neovascularization and vascular leakage. Moreover, single nucleotide polymorphism of Robo4 has been documented to be associated with autism suggesting its role in development and function of human brain.

Note: This product is for in vitro research use only