

# MAPK12 Antibody

Catalog No: #40092



Orders: [order@signalwayantibody.com](mailto:order@signalwayantibody.com)  
Support: [tech@signalwayantibody.com](mailto:tech@signalwayantibody.com)

## Description

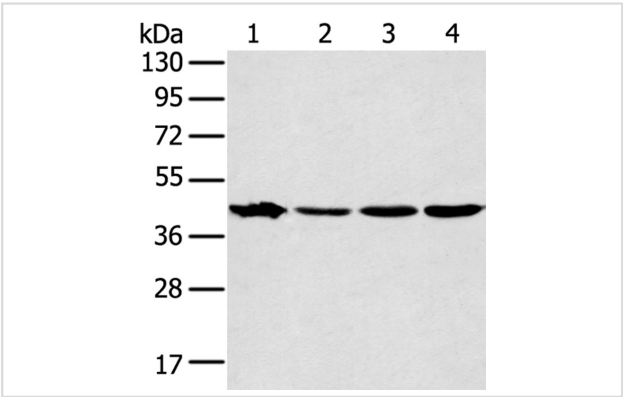
Product Name	MAPK12 Antibody
Host Species	Rabbit
Clonality	Polyclonal
Purification	Antigen affinity purification.
Applications	WB IHC
Species Reactivity	Hu Ms
Specificity	The antibody detects endogenous levels of total MAPK12 protein.
Immunogen Type	Protein
Immunogen Description	Full length fusion protein
Target Name	MAPK12
Other Names	ERK3; ERK6; SAPK3; PRKM12; SAPK-3; P38GAMMA
Accession No.	Swiss-Prot:P53778Gene Accssion:BC015741
Uniprot	P53778
GeneID	6300;
SDS-PAGE MW	42KD
Concentration	1.5mg/ml
Formulation	Rabbit IgG in pH7.4 PBS, 0.05% NaN3, 40% Glycerol.
Storage	Store at -20°C

## Application Details

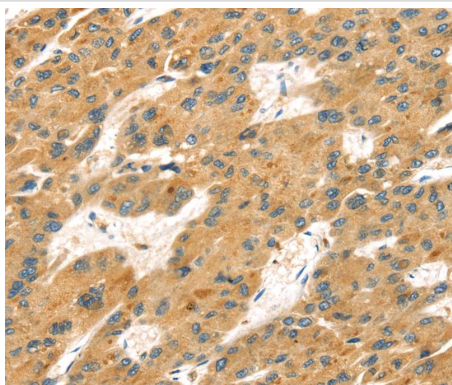
Western blotting: 1:500-1:2000

Immunohistochemistry:1:25-1:100

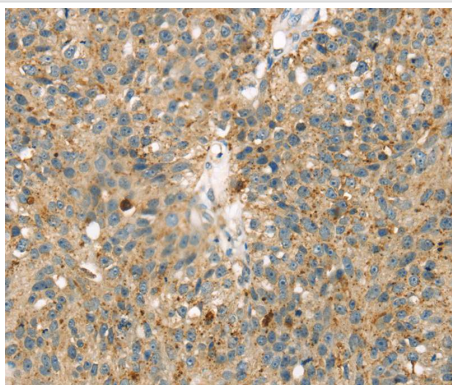
## Images



Gel: 8%SDS-PAGE  
Lysates (from left to right): Mouse muscle tissue and Jurkat cell, K562 and A431 cell  
Amount of lysate: 40ug per lane  
Primary antibody: 1/350 dilution  
Secondary antibody dilution: 1/8000  
Exposure time: 30 seconds



Immunohistochemical analysis of paraffin-embedded Human liver cancer tissue using #40092 at dilution 1/25.



Immunohistochemical analysis of paraffin-embedded Human breast cancer tissue using #40092 at dilution 1/25.

## Background

Activation of members of the mitogen-activated protein kinase family is a major mechanism for transduction of extracellular signals. Stress-activated protein kinases are one subclass of MAP kinases. The protein encoded by this gene functions as a signal transducer during differentiation of myoblasts to myotubes.?

Note: This product is for in vitro research use only