

## SH3KBP1 Antibody

Catalog No: #40103

Orders: [order@signalwayantibody.com](mailto:order@signalwayantibody.com)Support: [tech@signalwayantibody.com](mailto:tech@signalwayantibody.com)

## Description

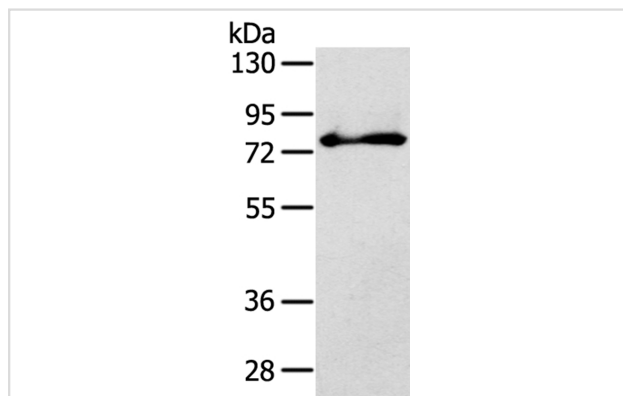
Product Name	SH3KBP1 Antibody
Host Species	Rabbit
Clonality	Polyclonal
Purification	Antigen affinity purification.
Applications	WB IHC
Species Reactivity	Hu
Specificity	The antibody detects endogenous levels of total SH3KBP1 protein.
Immunogen Type	Protein
Immunogen Description	Fusion protein corresponding to residues near the C terminal of human SH3-domain kinase binding protein 1
Target Name	SH3KBP1
Other Names	HSB1; CIN85; GIG10; HSB-1; MIG18; CD2BP3
Accession No.	Swiss-Prot:Q96B97Gene Accssion:BC015806
Uniprot	Q96B97
GeneID	30011;
SDS-PAGE MW	73KD
Concentration	2.6mg/ml
Formulation	Rabbit IgG in pH7.4 PBS, 0.05% NaN <sub>3</sub> , 40% Glycerol.
Storage	Store at -20°C

## Application Details

Western blotting: 1:500-1:2000

Immunohistochemistry:1:30-1:150

## Images

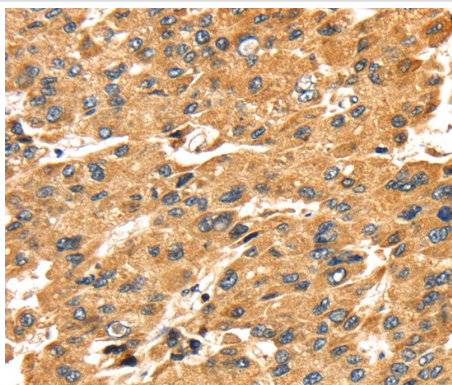


Gel: 8%SDS-PAGE

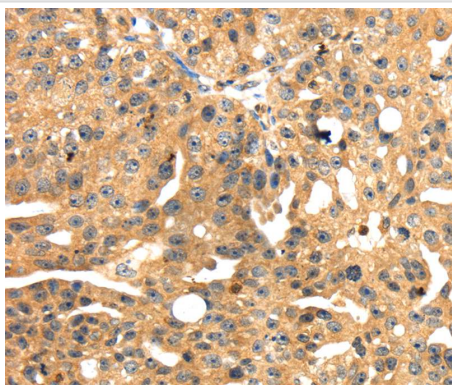
Lysate: 40ug Jurkat cellPrimary antibody: 1/800 dilution

Secondary antibody dilution: 1/8000

Exposure time: 30 seconds



Immunohistochemical analysis of paraffin-embedded Human liver cancer tissue using #40103 at dilution 1/45.



Immunohistochemical analysis of paraffin-embedded Human breast cancer tissue using #40103 at dilution 1/45.

## Background

This gene encodes an adapter protein that contains three N-terminal Src homology domains, a proline rich region and a C-terminal coiled-coil domain. The encoded protein facilitates protein-protein interactions and has been implicated in numerous cellular processes including apoptosis, cytoskeletal rearrangement, cell adhesion and in the regulation of clathrin-dependent endocytosis. Alternate splicing results in multiple transcript variants.

Note: This product is for in vitro research use only