

SIGLEC12 Antibody

Catalog No: #40105

Orders: order@signalwayantibody.comSupport: tech@signalwayantibody.com

Description

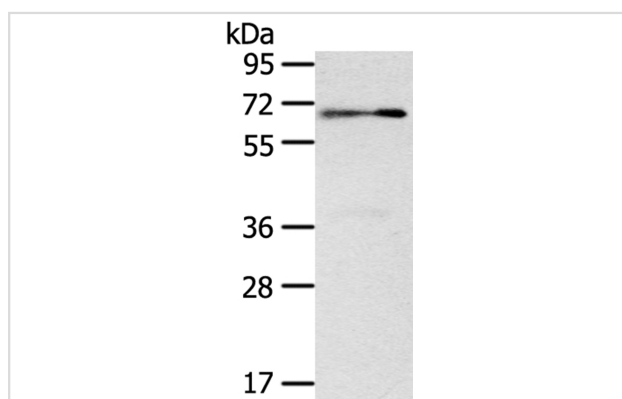
Product Name	SIGLEC12 Antibody
Host Species	Rabbit
Clonality	Polyclonal
Purification	Antigen affinity purification.
Applications	WB IHC
Species Reactivity	Hu Ms
Specificity	The antibody detects endogenous levels of total SIGLEC12 protein.
Immunogen Type	Protein
Immunogen Description	Fusion protein corresponding to residues near the N terminal of human sialic acid binding Ig-like lectin 12 (gene/pseudogene)
Target Name	SIGLEC12
Other Names	S2V; SLG; SIGLECL1; Siglec-XII
Accession No.	Swiss-Prot:Q96PQ1Gene Accssion:BC035809
Uniprot	Q96PQ1
GeneID	89858;
SDS-PAGE MW	65KD
Concentration	1.9mg/ml
Formulation	Rabbit IgG in pH7.4 PBS, 0.05% NaN ₃ , 40% Glycerol.
Storage	Store at -20°C

Application Details

Western blotting: 1:200-1:1000

Immunohistochemistry: 1:25-1:100

Images

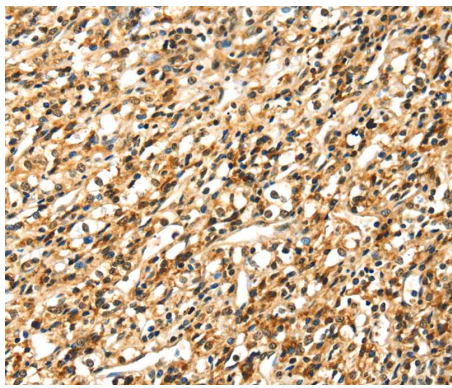


Gel: 8%SDS-PAGE

Lysate: 40ug Mouse bladder tissuePrimary antibody: 1/500 dilution

Secondary antibody dilution: 1/8000

Exposure time: 1 minute



Immunohistochemical analysis of paraffin-embedded Human prostate cancer tissue using #40105 at dilution 1/35.

Background

Sialic acid-binding immunoglobulin-like lectins (SIGLECs) are a family of cell surface proteins belonging to the immunoglobulin superfamily. They mediate protein-carbohydrate interactions by selectively binding to different sialic acid moieties present on glycolipids and glycoproteins. This gene encodes a member of the SIGLEC3-like subfamily of SIGLECs. Members of this subfamily are characterized by an extracellular V-set immunoglobulin-like domain followed by two C2-set immunoglobulin-like domains, and the cytoplasmic tyrosine-based motifs ITIM and SLAM-like.?

Note: This product is for in vitro research use only