

## SLC25A1 Antibody

Catalog No: #40107

Orders: [order@signalwayantibody.com](mailto:order@signalwayantibody.com)Support: [tech@signalwayantibody.com](mailto:tech@signalwayantibody.com)

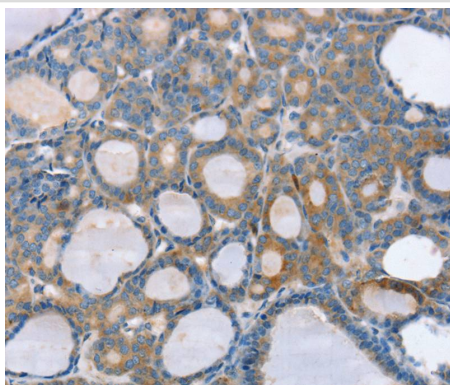
## Description

Product Name	SLC25A1 Antibody
Host Species	Rabbit
Clonality	Polyclonal
Purification	Antigen affinity purification.
Applications	IHC
Species Reactivity	Hu
Specificity	The antibody detects endogenous levels of total SLC25A1 protein.
Immunogen Type	Protein
Immunogen Description	Fusion protein corresponding to residues near the N terminal of human solute carrier family 25 (mitochondrial carrier; citrate transporter), member 1
Target Name	SLC25A1
Other Names	CTP; SEA; D2L2AD; SLC20A3
Accession No.	Swiss-Prot:P53007Gene Accssion:BC004980
Uniprot	P53007
GeneID	6576;
Concentration	1.3mg/ml
Formulation	Rabbit IgG in pH7.4 PBS, 0.05% NaN <sub>3</sub> , 40% Glycerol.
Storage	Store at -20°C

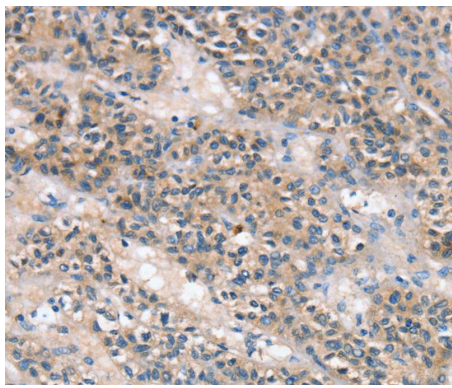
## Application Details

Immunohistochemistry:1:25-1:100

## Images



Immunohistochemical analysis of paraffin-embedded Human thyroid cancer tissue using #40107 at dilution 1/25.



Immunohistochemical analysis of paraffin-embedded Human liver cancer tissue using #40107 at dilution 1/25.

## Background

This gene encodes a member of the mitochondrial carrier subfamily of solute carrier proteins. Members of this family include nuclear-encoded transporters that translocate small metabolites across the mitochondrial membrane. This protein regulates the movement of citrate across the inner membranes of the mitochondria. Mutations in this gene have been associated with combined D-2- and L-2-hydroxyglutaric aciduria.

Note: This product is for in vitro research use only