

SNAI3 Antibody

Catalog No: #40110

Orders: order@signalwayantibody.comSupport: tech@signalwayantibody.com

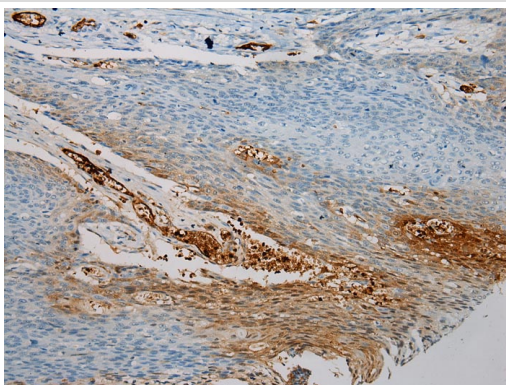
Description

| | |
|-----------------------|---|
| Product Name | SNAI3 Antibody |
| Host Species | Rabbit |
| Clonality | Polyclonal |
| Purification | Antigen affinity purification. |
| Applications | IHC |
| Species Reactivity | Hu |
| Specificity | The antibody detects endogenous levels of total SNAI3 protein. |
| Immunogen Type | Protein |
| Immunogen Description | Full length fusion protein |
| Target Name | SNAI3 |
| Other Names | SMUC; SNAIL3; ZNF293; Zfp293 |
| Accession No. | Swiss-Prot:Q3KNW1Gene Accssion:BC107058 |
| Uniprot | Q3KNW1 |
| GeneID | 333929; |
| Concentration | 1mg/ml |
| Formulation | Rabbit IgG in pH7.4 PBS, 0.05% NaN ₃ , 40% Glycerol. |
| Storage | Store at -20°C |

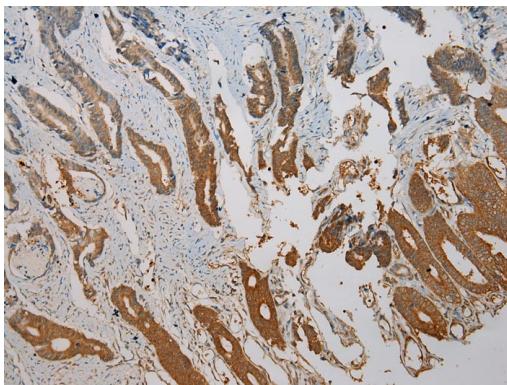
Application Details

Immunohistochemistry: 1:100-1:200

Images



Immunohistochemical analysis of paraffin-embedded Human Esophagus cancer tissue using #40110 at dilution 1/100.



Immunohistochemical analysis of paraffin-embedded Human Gastric cancer tissue using #40110 at dilution 1/100.

Background

SNAI3 is a member of the SNAIL gene family, named for the *Drosophila* snail gene, which plays roles in mesodermal formation during embryogenesis

Note: This product is for in vitro research use only