

SNX8 Antibody

Catalog No: #40114

Orders: order@signalwayantibody.comSupport: tech@signalwayantibody.com

Description

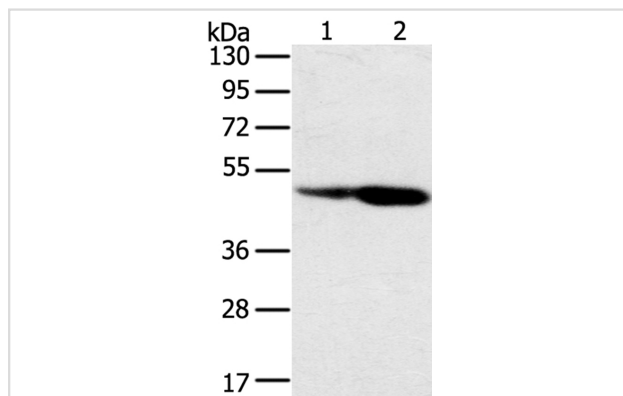
Product Name	SNX8 Antibody
Host Species	Rabbit
Clonality	Polyclonal
Purification	Antigen affinity purification.
Applications	WB IHC
Species Reactivity	Hu
Specificity	The antibody detects endogenous levels of total SNX8 protein.
Immunogen Type	Protein
Immunogen Description	Fusion protein corresponding to residues near the C terminal of human sorting nexin 8
Target Name	SNX8
Other Names	Mvp1
Accession No.	Swiss-Prot:Q9Y5X2Gene Accssion:BC021565
Uniprot	Q9Y5X2
GeneID	29886;
SDS-PAGE MW	53KD
Concentration	1.3mg/ml
Formulation	Rabbit IgG in pH7.4 PBS, 0.05% NaN ₃ , 40% Glycerol.
Storage	Store at -20°C

Application Details

Western blotting: 1:500-1:2000

Immunohistochemistry:1:25-1:100

Images



Gel: 8%SDS-PAGE

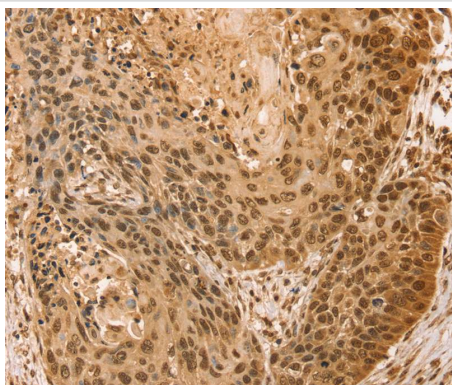
Lysates (from left to right): Hepg2 and hela cell

Amount of lysate: 40ug per lane

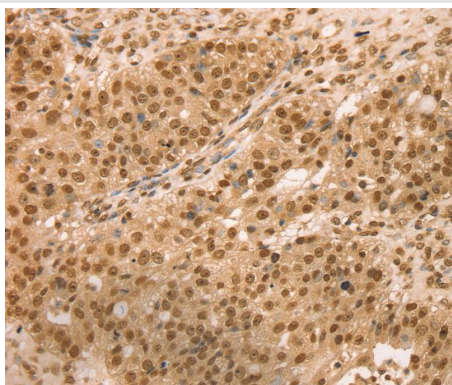
Primary antibody: 1/400 dilution

Secondary antibody dilution: 1/8000

Exposure time: 1 minute



Immunohistochemical analysis of paraffin-embedded Human esophagus cancer tissue using #40114 at dilution 1/25.



Immunohistochemical analysis of paraffin-embedded Human breast cancer tissue using #40114 at dilution 1/25.

Background

Sorting nexin (SNX) proteins are members of a large family of hydrophilic PX (phospholipid-binding motif) domain-containing proteins that interact with a variety of receptor types. SNXs are widely expressed, although the tissue distribution of each SNX mRNA varies. The ability of SNXs to bind specific phospholipids, as well as their tendency to form protein-protein complexes, suggests a role for these proteins in cellular membrane trafficking and protein sorting. SNXs may also function specifically in pro-degradative sorting, internalization, endosomal recycling or simply in endosomal sorting. SNXs partially associate with cellular membranes, despite their hydrophilic nature. SNX8 is an ortholog of a yeast protein.

Note: This product is for in vitro research use only