

SSX1 Antibody

Catalog No: #40118

Orders: order@signalwayantibody.comSupport: tech@signalwayantibody.com

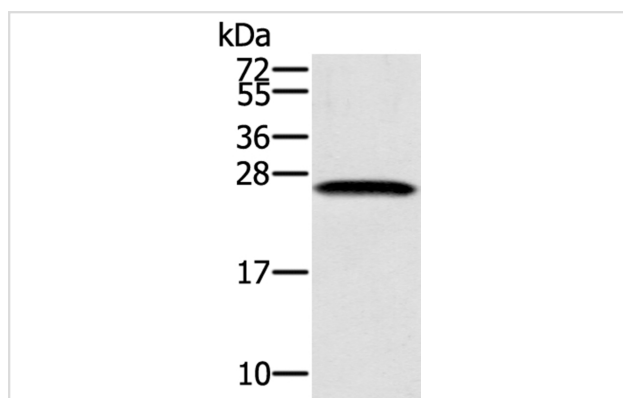
Description

| | |
|-----------------------|---|
| Product Name | SSX1 Antibody |
| Host Species | Rabbit |
| Clonality | Polyclonal |
| Purification | Antigen affinity purification. |
| Applications | WB |
| Species Reactivity | Hu |
| Specificity | The antibody detects endogenous levels of total SSX1 protein. |
| Immunogen Type | Protein |
| Immunogen Description | Full length fusion protein |
| Target Name | SSX1 |
| Other Names | SSRC; CT5.1 |
| Accession No. | Swiss-Prot:Q16384?Gene Accssion:BC128611 |
| Uniprot | Q16384 |
| GeneID | 6756; |
| SDS-PAGE MW | 22KD |
| Concentration | 1.9mg/ml |
| Formulation | Rabbit IgG in pH7.4 PBS, 0.05% NaN ₃ , 40% Glycerol. |
| Storage | Store at -20°C |

Application Details

Western blotting: 1:500-1:2000

Images



Gel: 12%SDS-PAGE
Lysate: 40ug K562 cell
Primary antibody: 1/400 dilution
Secondary antibody dilution: 1/8000
Exposure time: 1 minute

Background

The product of this gene belongs to the family of highly homologous synovial sarcoma X (SSX) breakpoint proteins. These proteins may function as transcriptional repressors. They are also capable of eliciting spontaneous humoral and cellular immune responses in cancer patients, and are

potentially useful targets in cancer vaccine-based immunotherapy.?

Note: This product is for in vitro research use only