

## PITPN antibody

Catalog No: #22504

Orders: [order@signalwayantibody.com](mailto:order@signalwayantibody.com)Support: [tech@signalwayantibody.com](mailto:tech@signalwayantibody.com)

## Description

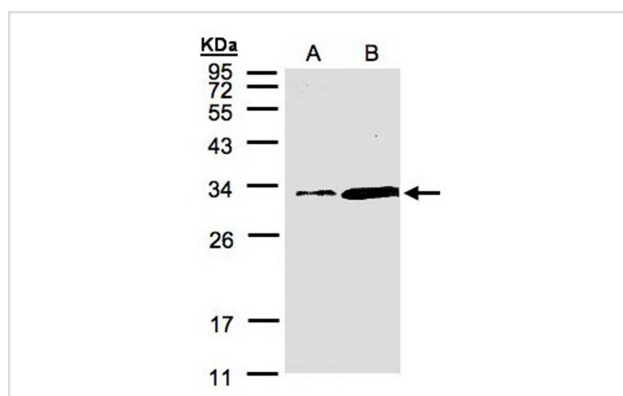
Product Name	PITPN antibody
Host Species	Rabbit
Clonality	Polyclonal
Purification	Purified by antigen-affinity chromatography.
Applications	WB
Species Reactivity	Hu
Immunogen Type	Peptide
Immunogen Description	Synthetic peptide contain a sequence corresponding to a region within amino acids 208 and 270 of Human PITPN
Target Name	PITPN
Accession No.	Swiss-Prot:Q00169Gene ID:5306
Uniprot	Q00169
GeneID	5306;
Concentration	1mg/ml
Formulation	Supplied in 0.1M Tris-buffered saline with 10% Glycerol (pH7.0). 0.01% Thimerosal was added as a preservative.
Storage	Store at -20°C for long term preservation (recommended). Store at 4°C for short term use.

## Application Details

Predicted MW: 32kd

Western blotting: 1:500-1:3000

## Images



Sample(30 ug of whole cell lysate)  
A: Hep G2  
B: MOLT4  
12% SDS PAGE  
Primary antibody diluted at 1: 1500

## Background

Phosphatidylinositol transfer protein is a member of a diverse set of cytosolic phospholipid transfer proteins that are distinguished by their ability to transfer phospholipids between membranes in vitro (Wirtz, 1991 [PubMed 1883207]).[supplied by OMIM]

---

Note: This product is for in vitro research use only