

# SULT1B1 Antibody

Catalog No: #40123



Orders: [order@signalwayantibody.com](mailto:order@signalwayantibody.com)  
Support: [tech@signalwayantibody.com](mailto:tech@signalwayantibody.com)

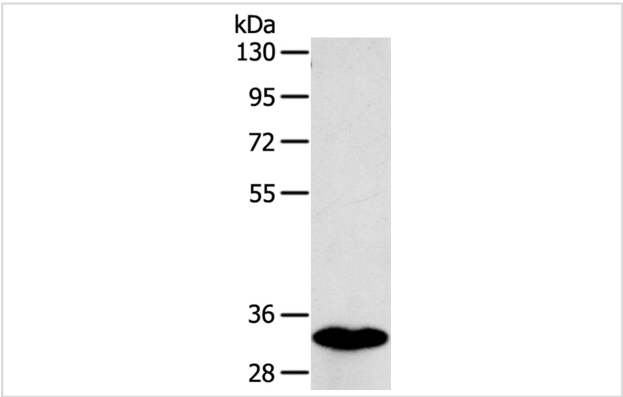
## Description

Product Name	SULT1B1 Antibody
Host Species	Rabbit
Clonality	Polyclonal
Purification	Antigen affinity purification.
Applications	WB IHC
Species Reactivity	Hu
Specificity	The antibody detects endogenous levels of total SULT1B1 protein.
Immunogen Type	Protein
Immunogen Description	Full length fusion protein
Target Name	SULT1B1
Other Names	ST1B1; ST1B2; SULT1B2
Accession No.	Swiss-Prot:O43704Gene Accssion:BC010895
Uniprot	O43704
GeneID	27284;
SDS-PAGE MW	35KD
Concentration	1.8mg/ml
Formulation	Rabbit IgG in pH7.4 PBS, 0.05% NaN3, 40% Glycerol.
Storage	Store at -20°C

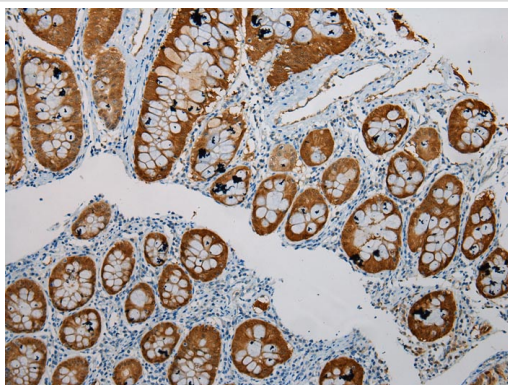
## Application Details

Western blotting: 1:1000-1:5000
Immunohistochemistry: 1:100-1:200

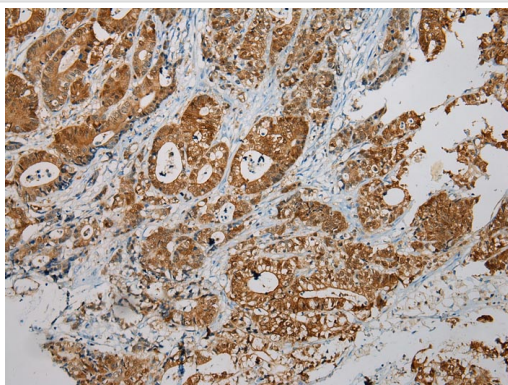
## Images



Gel: 8%SDS-PAGE  
Lysate: 40ug Human fetal intestines tissuePrimary antibody:  
1/800 dilution  
Secondary antibody dilution: 1/8000  
Exposure time: 3 seconds



Immunohistochemical analysis of paraffin-embedded Human Colorectal cancer tissue using #40123 at dilution 1/200.



Immunohistochemical analysis of paraffin-embedded Human Gastric cancer tissue using #40123 at dilution 1/200.

## Background

Sulfotransferase enzymes catalyze the sulfate conjugation of many hormones, neurotransmitters, drugs, and xenobiotic compounds. These cytosolic enzymes are different in their tissue distributions and substrate specificities. The gene structure (number and length of exons) is similar among family members. However, the total genomic length of this gene is greater than that of other SULT1 genes.

Note: This product is for in vitro research use only