

COPD antibody

Catalog No: #22506



Orders: [order@signalwayantibody.com](mailto:order@signalwayantibody.com)  
Support: [tech@signalwayantibody.com](mailto:tech@signalwayantibody.com)

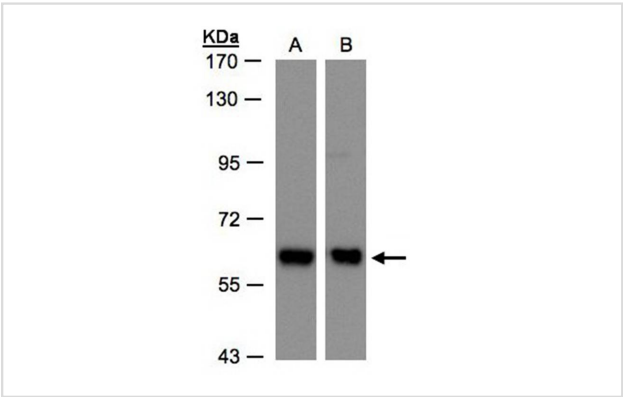
Description

|                       |   |
|-----------------------|---|
| Product Name          | COPD antibody   |
| Host Species          | Rabbit  |
| Clonality             | Polyclonal  |
| Purification          | Purified by antigen-affinity chromatography.  |
| Applications          | WB IF   |
| Species Reactivity    | Hu  |
| Immunogen Type        | Recombinant protein   |
| Immunogen Description | Recombinant protein fragment contain a sequence corresponding to a region within amino acids 89 and 492 of COPD |
| Target Name           | COPD  |
| Accession No.         | Swiss-Prot:P48444Gene ID:372  |
| Uniprot               | P48444  |
| GeneID                | 372;  |
| Concentration         | 0.8mg/ml  |
| Formulation           | Supplied in 0.1M Tris-buffered saline with 10% Glycerol (pH7.0). 0.01% Thimerosal was added as a preservative.  |
| Storage               | Store at -20°C for long term preservation (recommended). Store at 4°C for short term use.                       |

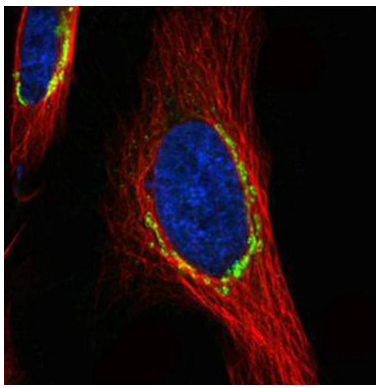
Application Details

Predicted MW: 57kd  
Western blotting: 1:500-1:3000  
Immunofluorescence: 1:100-1:200

Images



Sample(30 ug whole cell lysate)  
A: H1299  
B: Hep G2  
7.5% SDS PAGE  
Primary antibody diluted at 1: 500



Confocal immunofluorescence analysis (Olympus FV10i) of paraformaldehyde-fixed HeLa, using COPD antibody (green) at 1: 500 dilution and alpha-tubulin antibody (red) at 1: 2500.

## Background

This gene maps in a region, which include the mixed lineage leukemia and Friend leukemia virus integration 1 genes, where multiple disease-associated chromosome translocations occur. It is an intracellular protein. Archain sequences are well conserved among eukaryotes and this protein may play a fundamental role in eukaryotic cell biology. It has similarities to heat shock proteins and clathrin-associated proteins, and may be involved in vesicle structure or trafficking. [provided by RefSeq]

Note: This product is for in vitro research use only