

## RASD2 Antibody

Catalog No: #40139

Orders: [order@signalwayantibody.com](mailto:order@signalwayantibody.com)Support: [tech@signalwayantibody.com](mailto:tech@signalwayantibody.com)

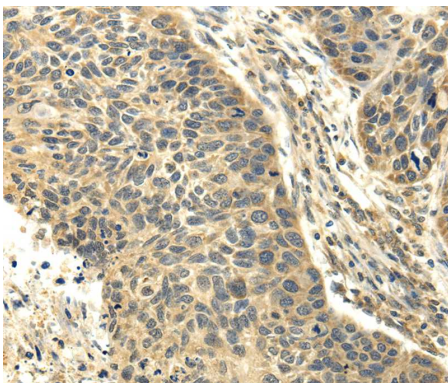
## Description

Product Name	RASD2 Antibody
Host Species	Rabbit
Clonality	Polyclonal
Purification	Antigen affinity purification.
Applications	IHC
Species Reactivity	Hu Ms
Specificity	The antibody detects endogenous levels of total RASD2 protein.
Immunogen Type	Protein
Immunogen Description	Full length fusion protein
Target Name	RASD2
Other Names	Rhes; TEM2; MGC:4834
Accession No.	Swiss-Prot:Q96D21Gene Accssion:BC013419
Uniprot	Q96D21
GeneID	23551;
Concentration	1.4mg/ml
Formulation	Rabbit IgG in pH7.4 PBS, 0.05% NaN <sub>3</sub> , 40% Glycerol.
Storage	Store at -20°C

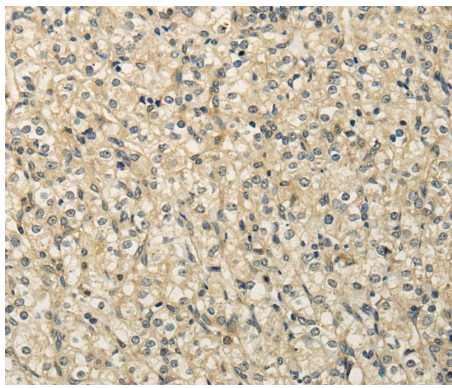
## Application Details

Immunohistochemistry:1:25-1:100

## Images



Immunohistochemical analysis of paraffin-embedded Human esophagus cancer tissue using #40139 at dilution 1/25.



Immunohistochemical analysis of paraffin-embedded Human prostate cancer tissue using #40139 at dilution 1/25.

## Background

This gene encodes a Ras-related protein that enriched in striatum. The product of this gene binds to GTP and possesses intrinsic GTPase activity. The gene belongs to the Ras superfamily of small GTPases. The exact function of this gene is unknown, but most striatum-specific mRNAs characterized to date encode components of signal transduction cascades.

Note: This product is for in vitro research use only