

## THAP4 Antibody

Catalog No: #40142

Orders: [order@signalwayantibody.com](mailto:order@signalwayantibody.com)Support: [tech@signalwayantibody.com](mailto:tech@signalwayantibody.com)

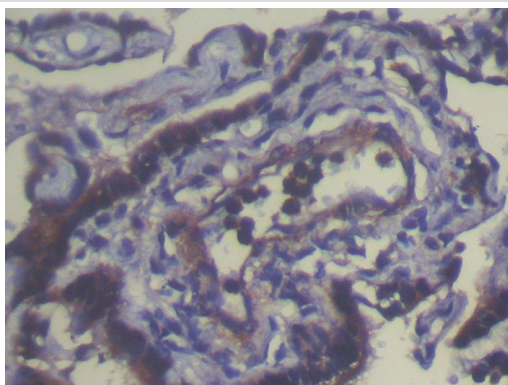
## Description

Product Name	THAP4 Antibody
Host Species	Rabbit
Clonality	Polyclonal
Purification	Antigen affinity purification.
Applications	IHC
Species Reactivity	Hu
Specificity	The antibody detects endogenous levels of total THAP4 protein.
Immunogen Type	Protein
Immunogen Description	Fusion protein corresponding to residues near the C terminal of human THAP domain containing 4
Target Name	THAP4
Other Names	PP238; CGI-36
Accession No.	Swiss-Prot:Q8WY91 Gene Accssion:BC000247
Uniprot	Q8WY91
GeneID	51078;
Concentration	1.0mg/ml
Formulation	Rabbit IgG in pH7.4 PBS, 0.05% NaN <sub>3</sub> , 40% Glycerol.
Storage	Store at -20°C

## Application Details

Immunohistochemistry: 1:100-1:200

## Images



Immunohistochemical analysis of paraffin-embedded Human Lung cancer tissue using #40142 at dilution 1/00.

## Background

Human THAP4 is a 577 residue protein of unknown function that is proposed to bind DNA in a sequence specific manner similar to THAP1 and has been found to be upregulated in response to heat shock. THAP4 is expressed in a relatively uniform manner in a broad range of tissues and appears to be upregulated in lymphoma cells and highly expressed in heart cells<sup>13</sup>. The C-terminal domain of THAP4 (residues 415-577), designated here as cTHAP4, is evolutionarily conserved and is observed in all known THAP4 orthologues. Several single domain proteins lacking a THAP domain are

found in plants and bacteria, and show significant levels of homology to cTHAP4. It appears that cTHAP4 belongs to a large class of proteins that have yet to be fully functionally characterized.

---

Note: This product is for in vitro research use only