

## THSD1 Antibody

Catalog No: #40145

Orders: [order@signalwayantibody.com](mailto:order@signalwayantibody.com)Support: [tech@signalwayantibody.com](mailto:tech@signalwayantibody.com)

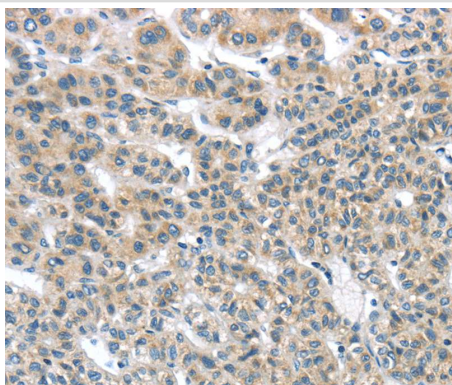
## Description

Product Name	THSD1 Antibody
Host Species	Rabbit
Clonality	Polyclonal
Purification	Antigen affinity purification.
Applications	IHC
Species Reactivity	Hu
Specificity	The antibody detects endogenous levels of total THSD1 protein.
Immunogen Type	Protein
Immunogen Description	Fusion protein corresponding to a region derived from internal residues of human thrombospondin, type I, domain containing 1
Target Name	THSD1
Other Names	TMTSP; UNQ3010
Accession No.	Swiss-Prot:Q9NS62Gene Accssion:BC063842
Uniprot	Q9NS62
GeneID	55901;
Concentration	1.4mg/ml
Formulation	Rabbit IgG in pH7.4 PBS, 0.05% NaN <sub>3</sub> , 40% Glycerol.
Storage	Store at -20°C

## Application Details

Immunohistochemistry:1:25-1:100

## Images



Immunohistochemical analysis of paraffin-embedded Human liver cancer tissue using #40145 at dilution 1/25.

## Background

The protein encoded by this gene contains a type 1 thrombospondin domain, which is found in a number of proteins involved in the complement pathway, as well as in extracellular matrix proteins. Alternatively spliced transcript variants encoding different isoforms have been observed for this

gene.

---

Note: This product is for in vitro research use only