

## TMEM161A Antibody

Catalog No: #40157

Orders: [order@signalwayantibody.com](mailto:order@signalwayantibody.com)Support: [tech@signalwayantibody.com](mailto:tech@signalwayantibody.com)

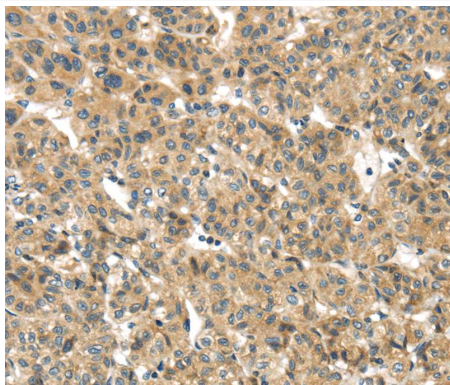
## Description

Product Name	TMEM161A Antibody
Host Species	Rabbit
Clonality	Polyclonal
Purification	Antigen affinity purification.
Applications	IHC
Species Reactivity	Hu
Specificity	The antibody detects endogenous levels of total TMEM161A protein.
Immunogen Type	Protein
Immunogen Description	Fusion protein corresponding to residues near the N terminal of human transmembrane protein 161A
Target Name	TMEM161A
Other Names	AROS-29
Accession No.	Swiss-Prot:BC005210Gene Accssion:BC005210
Concentration	1.8mg/ml
Formulation	Rabbit IgG in pH7.4 PBS, 0.05% NaN <sub>3</sub> , 40% Glycerol.
Storage	Store at -20°C

## Application Details

Immunohistochemistry:1:25-1:100

## Images



Immunohistochemical analysis of paraffin-embedded Human liver cancer tissue using #40157 at dilution 1/30.

## Background

May play a role in protection against oxidative stress. Overexpression leads to reduced levels of oxidant-induced DNA damage and apoptosis.

Note: This product is for in vitro research use only