

CERS3 Antibody

Catalog No: #40197

Orders: order@signalwayantibody.comSupport: tech@signalwayantibody.com

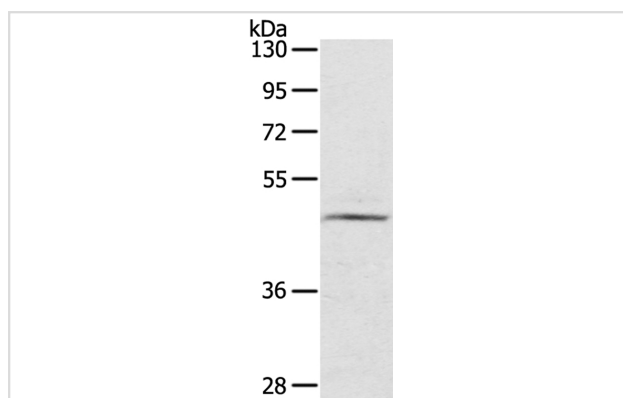
Description

Product Name	CERS3 Antibody
Host Species	Rabbit
Clonality	Polyclonal
Purification	Antigen affinity purification.
Applications	WB
Species Reactivity	Hu
Specificity	The antibody detects endogenous levels of total CERS3 protein.
Immunogen Type	Peptide
Immunogen Description	Synthetic peptide corresponding to a region derived from internal residues of human ceramide synthase 3
Target Name	CERS3
Other Names	ARCI9; LASS3
Accession No.	Swiss-Prot:Q8IU89Gene Accssion:NP_849164
Uniprot	Q8IU89
GeneID	204219;
SDS-PAGE MW	46KD
Concentration	1mg/ml
Formulation	Rabbit IgG in pH7.4 PBS, 0.05% NaN ₃ , 40% Glycerol.
Storage	Store at -20°C

Application Details

Western blotting: 1:200-1:1000

Images



Gel: 8%SDS-PAGE
 Lysate: 40ug TM4 cell
 Primary antibody: 1/200 dilution
 Secondary antibody dilution: 1/8000
 Exposure time: 3 minutes

Background

LASS3 is a 383 amino acid membrane protein almost exclusively expressed in testis, suggesting that LASS3 plays an important role in proper testis function. It is also weakly expressed in skin. A transcriptional variant of LASS3 cDNA exists and can result in the production of a 419 amino acid

protein (LASS3-long). LASS3 overproduction raises the level of several ceramide species, including C18:0- and C24:0-ceramides.

Note: This product is for in vitro research use only