

NR2F2 Antibody

Catalog No: #40203

Orders: order@signalwayantibody.comSupport: tech@signalwayantibody.com

Description

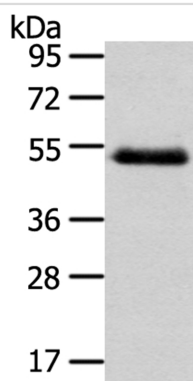
Product Name	NR2F2 Antibody
Host Species	Rabbit
Clonality	Polyclonal
Purification	Antigen affinity purification.
Applications	WB IHC
Species Reactivity	Hu Ms Rt
Specificity	The antibody detects endogenous levels of total NR2F2 protein.
Immunogen Type	Peptide
Immunogen Description	Synthetic peptide corresponding to residues near the N terminal of human nuclear receptor subfamily 2, group F, member 2
Target Name	NR2F2
Other Names	ARP1; CHTD4; NF-E3; NR2F1; SVP40; COUPTFB; TFCOUP2; COUPTFII
Accession No.	Swiss-Prot:P24468Gene Accssion:NP_001138627
Uniprot	P24468
GeneID	7026;
SDS-PAGE MW	46KD
Concentration	1.6mg/ml
Formulation	Rabbit IgG in pH7.4 PBS, 0.05% NaN ₃ , 40% Glycerol.
Storage	Store at -20°C

Application Details

Western blotting: 1:500-1:2000

Immunohistochemistry: 1:25-1:100

Images

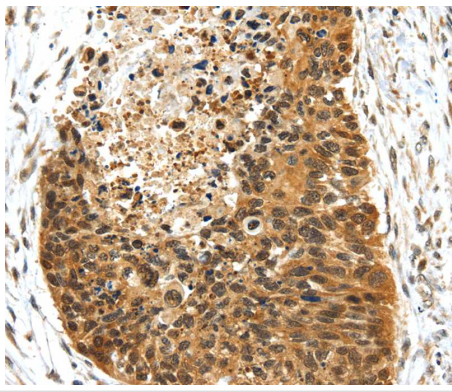


Gel: 8%SDS-PAGE

Lysate: 40ug Human placenta tissuePrimary antibody: 1/200
dilution

Secondary antibody dilution: 1/8000

Exposure time: 1 minute



Immunohistochemical analysis of paraffin-embedded Human esophagus cancer tissue using #40203 at dilution 1/25.

Background

This gene encodes a member of the steroid thyroid hormone superfamily of nuclear receptors. The encoded protein is a ligand inducible transcription factor that is involved in the regulation of many different genes. Alternate splicing results in multiple transcript variants.?

Note: This product is for in vitro research use only