

PROX1 Antibody

Catalog No: #40209



Orders: order@signalwayantibody.com
Support: tech@signalwayantibody.com

Description

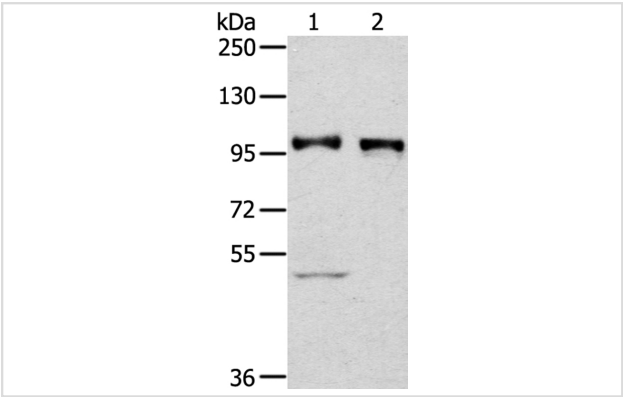
Product Name	PROX1 Antibody
Host Species	Rabbit
Clonality	Polyclonal
Purification	Antigen affinity purification.
Applications	WB IHC
Species Reactivity	Hu Ms
Specificity	The antibody detects endogenous levels of total PROX1 protein.
Immunogen Type	Peptide
Immunogen Description	Synthetic peptide of human prospero homeobox 1
Target Name	PROX1
Accession No.	Swiss-Prot:Q92786Gene Accssion:NP_001257545
Uniprot	Q92786
GeneID	5629;
SDS-PAGE MW	83KD
Concentration	2.5mg/ml
Formulation	Rabbit IgG in pH7.4 PBS, 0.05% NaN3, 40% Glycerol.
Storage	Store at -20°C

Application Details

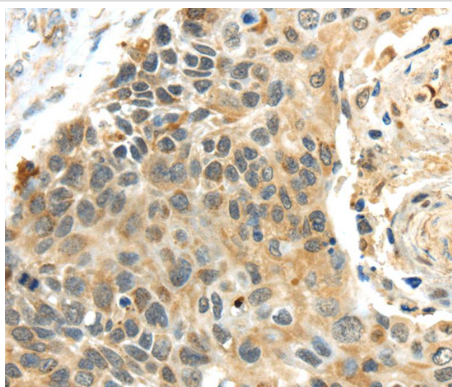
Western blotting: 1:500-1:2000

Immunohistochemistry:1:25-1:100

Images



Gel: 6%SDS-PAGE
Lysates (from left to right): Human fetal liver tissue and 231 cell
Amount of lysate: 40ug per lane
Primary antibody: 1/300 dilution
Secondary antibody dilution: 1/8000
Exposure time: 2 minutes



Immunohistochemical analysis of paraffin-embedded Human esophagus cancer tissue using #40209 at dilution 1/40.

Background

The protein encoded by this gene is a member of the homeobox transcription factor family. Members of this family contain a homeobox domain that consists of a 60-amino acid helix-turn-helix structure that binds DNA and RNA. The protein encoded by this gene is conserved across vertebrates and may play an essential role during development.?

Note: This product is for in vitro research use only