

RORA Antibody

Catalog No: #40212

Orders: order@signalwayantibody.comSupport: tech@signalwayantibody.com

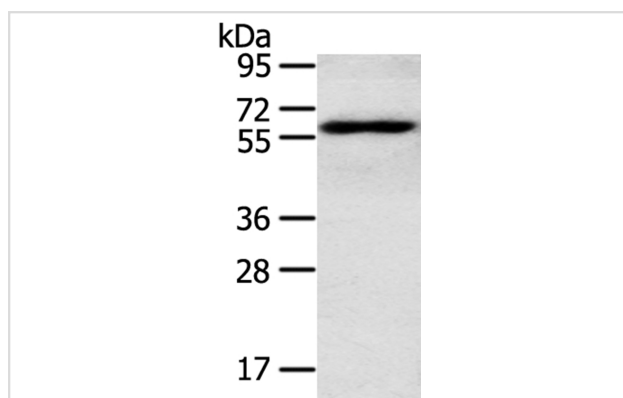
Description

Product Name	RORA Antibody
Host Species	Rabbit
Clonality	Polyclonal
Purification	Antigen affinity purification.
Applications	WB
Species Reactivity	Hu
Specificity	The antibody detects endogenous levels of total RORA protein.
Immunogen Type	Peptide
Immunogen Description	Synthetic peptide corresponding to residues near the N terminal of human RAR-related orphan receptor A
Target Name	RORA
Other Names	ROR1; ROR2; ROR3; RZRA; NR1F1; RZR-ALPHA
Accession No.	Swiss-Prot:P35398Gene Accssion:NP_002934
Uniprot	P35398
GeneID	6095;
SDS-PAGE MW	59KD
Concentration	3mg/ml
Formulation	Rabbit IgG in pH7.4 PBS, 0.05% NaN ₃ , 40% Glycerol.
Storage	Store at -20°C

Application Details

Western blotting: 1:500-1:2000

Images



Gel: 8%SDS-PAGE
Lysate: 40ug TM4 cellPrimary antibody: 1/400 dilution
Secondary antibody dilution: 1/8000
Exposure time: 3 minutes

Background

The protein encoded by this gene is a member of the NR1 subfamily of nuclear hormone receptors. It can bind as a monomer or as a homodimer to hormone response elements upstream of several genes to enhance the expression of those genes. The encoded protein has been shown to interact

with NM23-2, a nucleoside diphosphate kinase involved in organogenesis and differentiation, as well as with NM23-1, the product of a tumor metastasis suppressor candidate gene. Also, it has been shown to aid in the transcriptional regulation of some genes involved in circadian rhythm.

Note: This product is for in vitro research use only