

ERVW-1 Antibody

Catalog No: #40230

Orders: order@signalwayantibody.comSupport: tech@signalwayantibody.com

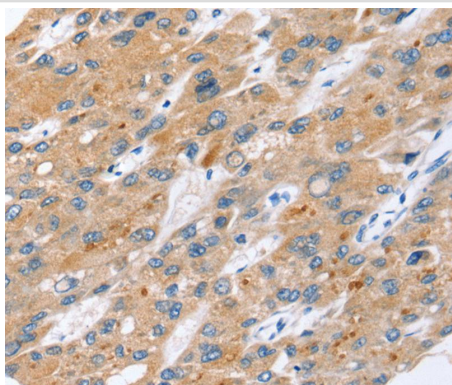
Description

Product Name	ERVW-1 Antibody
Host Species	Rabbit
Clonality	Polyclonal
Purification	Antigen affinity purification.
Applications	IHC
Species Reactivity	Hu
Specificity	The antibody detects endogenous levels of total ERVW-1 protein.
Immunogen Type	Peptide
Immunogen Description	Synthetic peptide corresponding to residues near the C terminal of human endogenous retrovirus group W, member 1
Target Name	ERVW-1
Other Names	ENV; ENVW; HERVW; ERVWE1; HERV7Q; HERV-7q; HERVWENV; HERV-W-ENV
Accession No.	Swiss-Prot:Q9UQF0Gene Accssion:NP_055405
Uniprot	Q9UQF0
GeneID	30816;
Concentration	2.5mg/ml
Formulation	Rabbit IgG in pH7.4 PBS, 0.05% NaN ₃ , 40% Glycerol.
Storage	Store at -20°C

Application Details

Immunohistochemistry:1:25-1:100

Images



Immunohistochemical analysis of paraffin-embedded Human liver cancer tissue using #40230 at dilution 1/45.

Background

Many different human endogenous retrovirus (HERV) families are expressed in normal placental tissue at high levels, suggesting that HERVs are functionally important in reproduction. This gene is part of an HERV provirus on chromosome 7 that has inactivating mutations in the gag and pol

genes. This gene is the envelope glycoprotein gene which appears to have been selectively preserved. The gene's protein product is expressed in the placental syncytiotrophoblast and is involved in fusion of the cytotrophoblast cells to form the syncytial layer of the placenta.?

Note: This product is for in vitro research use only