

## F2 Antibody

Catalog No: #40244

Orders: [order@signalwayantibody.com](mailto:order@signalwayantibody.com)Support: [tech@signalwayantibody.com](mailto:tech@signalwayantibody.com)

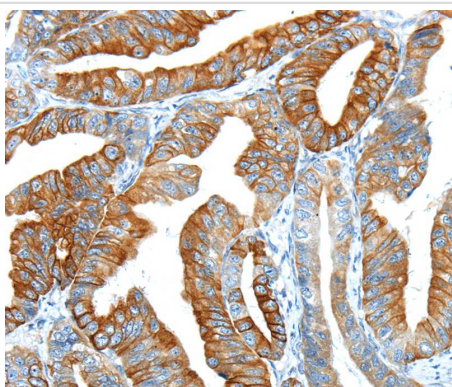
## Description

Product Name	F2 Antibody
Host Species	Rabbit
Clonality	Polyclonal
Purification	Antigen affinity purification.
Applications	IHC
Species Reactivity	Hu
Specificity	The antibody detects endogenous levels of total F2 protein.
Immunogen Type	Peptide
Immunogen Description	Synthetic peptide corresponding to residues near the N terminal of human coagulation factor II (thrombin)
Target Name	F2
Other Names	PT; THPH1; RPRGL2
Accession No.	Swiss-Prot:P00734Gene Accssion:NP_000497
Uniprot	P00734
GeneID	2147;
Concentration	1.2mg/ml
Formulation	Rabbit IgG in pH7.4 PBS, 0.05% NaN <sub>3</sub> , 40% Glycerol.
Storage	Store at -20°C

## Application Details

Immunohistochemistry:1:20-1:100

## Images



Immunohistochemical analysis of paraffin-embedded Human esophagus cancer tissue using #40244 at dilution 1/20.

## Background

Coagulation factor II is proteolytically cleaved to form thrombin in the first step of the coagulation cascade which ultimately results in the stemming of blood loss. F2 also plays a role in maintaining vascular integrity during development and postnatal life. Finally, peptides derived from the C-terminus of this protein have antimicrobial activity against *E. coli* and *P. aeruginosa*. Mutations in F2 leads to various forms of thrombosis and dysprothrombinemia.

---

Note: This product is for in vitro research use only