

NME2 Antibody

Catalog No: #40247



Orders: order@signalwayantibody.com
Support: tech@signalwayantibody.com

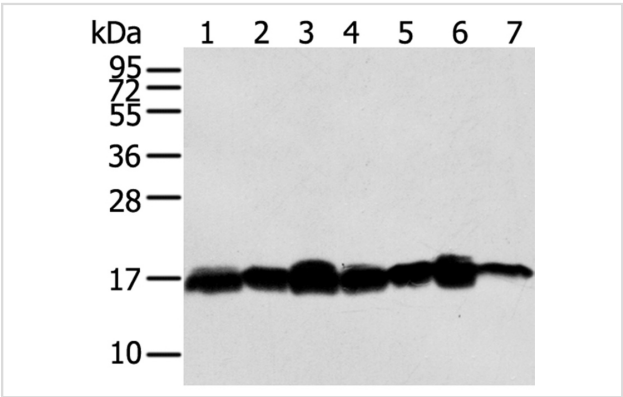
Description

Product Name	NME2 Antibody
Host Species	Rabbit
Clonality	Polyclonal
Purification	Antigen affinity purification.
Applications	WB IHC
Species Reactivity	Hu Ms
Specificity	The antibody detects endogenous levels of total NME2 protein.
Immunogen Type	Peptide
Immunogen Description	Synthetic peptide corresponding to residues near the C terminal of human NME/NM23 nucleoside diphosphate kinase 2
Target Name	NME2
Other Names	PUF; NDKB; NDPKB; NM23B; NDPK-B; NM23-H2
Accession No.	Swiss-Prot:P22392Gene Accssion:NP_002503
Uniprot	P22392
GeneID	4831;654364;
SDS-PAGE MW	17KD
Concentration	2.8mg/ml
Formulation	Rabbit IgG in pH7.4 PBS, 0.05% NaN3, 40% Glycerol.
Storage	Store at -20°C

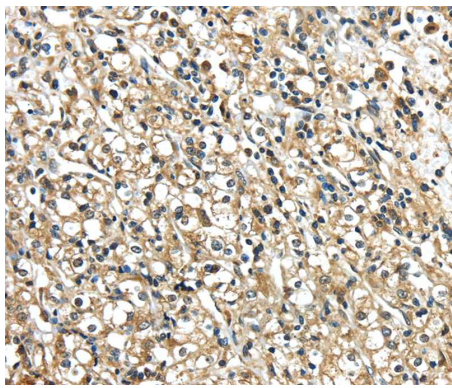
Application Details

Western blotting: 1:1000-1:5000
Immunohistochemistry:1:30-1:150

Images



Gel: 12%SDS-PAGE
Lysates (from left to right): HeLa, NIH/3T3, Incap and 293T cell, mouse brain tissue, A549 and Jurkat cell
Amount of lysate: 40ug per lane
Primary antibody: 1/300 dilution
Secondary antibody dilution: 1/8000
Exposure time: 30 seconds



Immunohistochemical analysis of paraffin-embedded Human prostate cancer tissue using #40247 at dilution 1/40.

Background

Nucleoside diphosphate kinase (NDK) exists as a hexamer composed of 'A' (encoded by NME1) and 'B' (encoded by this gene) isoforms. Multiple alternatively spliced transcript variants have been found for this gene. Read-through transcription from the neighboring upstream gene (NME1) generates naturally-occurring transcripts (NME1-NME2) that encode a fusion protein comprised of sequence sharing identity with each individual gene product.?

Note: This product is for in vitro research use only