

## TRIM35 Antibody

Catalog No: #40249

Orders: [order@signalwayantibody.com](mailto:order@signalwayantibody.com)Support: [tech@signalwayantibody.com](mailto:tech@signalwayantibody.com)

## Description

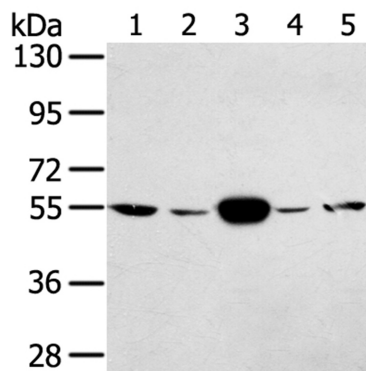
Product Name	TRIM35 Antibody
Host Species	Rabbit
Clonality	Polyclonal
Purification	Antigen affinity purification.
Applications	WB IHC
Species Reactivity	Hu
Specificity	The antibody detects endogenous levels of total TRIM35 protein.
Immunogen Type	Peptide
Immunogen Description	Synthetic peptide corresponding to residues near the C terminal of human tripartite motif containing 35
Target Name	TRIM35
Other Names	HLS5; MAIR
Accession No.	Swiss-Prot:Q9UPQ4Gene Accssion:NP_741983
Uniprot	Q9UPQ4
GeneID	23087;
SDS-PAGE MW	57KD
Concentration	1.5mg/ml
Formulation	Rabbit IgG in pH7.4 PBS, 0.05% NaN <sub>3</sub> , 40% Glycerol.
Storage	Store at -20°C

## Application Details

Western blotting: 1:500-1:2000

Immunohistochemistry:1:25-1:100

## Images



Gel: 8%SDS-PAGE

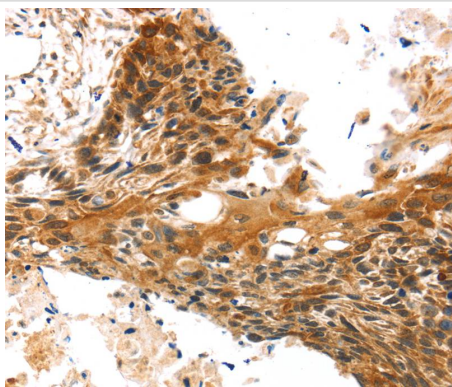
Lysates (from left to right): Hela and K562 cell, human fetal muscle tissue, A375 and hepg2 cell

Amount of lysate: 40ug per lane

Primary antibody: 1/400 dilution

Secondary antibody dilution: 1/8000

Exposure time: 20 seconds



Immunohistochemical analysis of paraffin-embedded Human esophagus cancer tissue using #40249 at dilution 1/25.

## Background

The protein encoded by this gene is a member of the tripartite motif (TRIM) family. The TRIM motif includes three zinc-binding domains, a RING, a B-box type 1 and a B-box type 2, and a coiled-coil region. The function of this protein has not been identified.

Note: This product is for in vitro research use only