

RED antibody

Catalog No: #22518

Orders: order@signalwayantibody.comSupport: tech@signalwayantibody.com

Description

Product Name	RED antibody
Host Species	Rabbit
Clonality	Polyclonal
Purification	Purified by antigen-affinity chromatography.
Applications	WB IF
Species Reactivity	Hu
Immunogen Type	Peptide
Immunogen Description	Synthetic peptide contain a sequence corresponding to a region within amino acids 1 and 15 of RED
Target Name	RED
Accession No.	Swiss-Prot:Q13123Gene ID:3550
Uniprot	Q13123
GeneID	3550;
Concentration	1mg/ml
Formulation	Supplied in 0.1M Tris-buffered saline with 10% Glycerol (pH7.0). 0.01% Thimerosal was added as a preservative.
Storage	Store at -20°C for long term preservation (recommended). Store at 4°C for short term use.

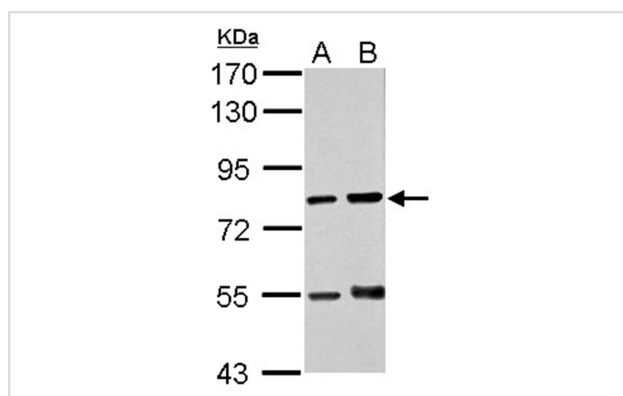
Application Details

Predicted MW: 66kd

Western blotting: 1:500-1:3000

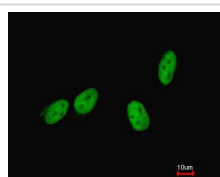
Immunofluorescence: 1:100-1:200

Images



Sample (30 ug of whole cell lysate)
A: THP-1
B: HL-60
7.5% SDS PAGE
Primary antibody diluted at 1: 1000

Immunofluorescence analysis of paraformaldehyde-fixed HeLa, using RED antibody at 1: 200 dilution.



Merged with DNA probe



Background

The protein encoded by this gene was identified by its RED repeat, a stretch of repeated arginine, glutamic acid and aspartic acid residues. The protein localizes to discrete dots within the nucleus, excluding the nucleolus. Its function is unknown. This gene maps to chromosome 5; however, a pseudogene may exist on chromosome 2. [provided by RefSeq]

Note: This product is for in vitro research use only