

PCCase beta antibody

Catalog No: #22519



Orders: order@signalwayantibody.com
Support: tech@signalwayantibody.com

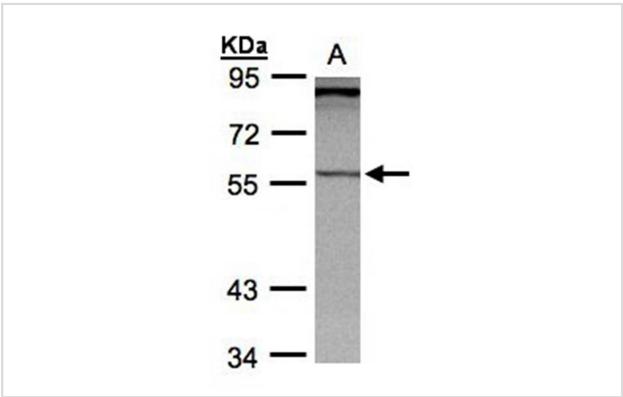
Description

Product Name	PCCase beta antibody
Host Species	Rabbit
Clonality	Polyclonal
Purification	Purified by antigen-affinity chromatography.
Applications	WB IHC IF
Species Reactivity	Hu
Immunogen Type	Recombinant protein
Immunogen Description	Recombinant protein fragment contain a sequence corresponding to a region within amino acids 167 and 450 of Human PCCB
Target Name	PCCase beta
Accession No.	Swiss-Prot:P05166Gene ID:5096
Uniprot	P05166
GeneID	5096;
Concentration	0.5mg/ml
Formulation	Supplied in 0.1M Tris-buffered saline with 10% Glycerol (pH7.0). 0.01% Thimerosal was added as a preservative.
Storage	Store at -20°C for long term preservation (recommended). Store at 4°C for short term use.

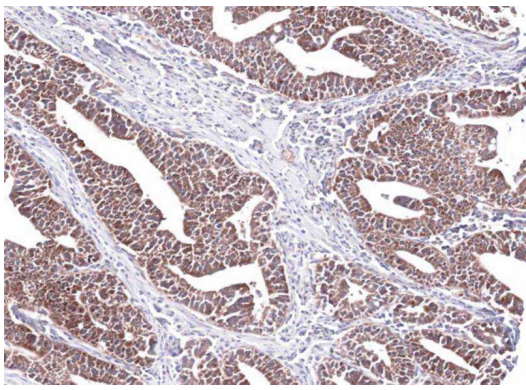
Application Details

Predicted MW: 58kd
Western blotting: 1:500-1:3000
Immunohistochemistry: 1:100-1:250
Immunofluorescence: 1:100-1:200

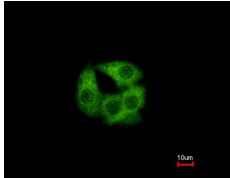
Images



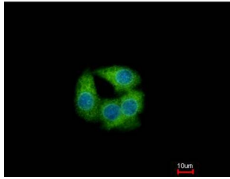
Sample (30ug whole cell lysate)
A: Hep G2
7.5% SDS PAGE
Primary antibody diluted at 1: 1000



Immunohistochemical analysis of paraffin-embedded Lung Ad Cancer PC14 xenograft, using PCCB antibody at 1: 100 dilution.



Costained with Hoechst 33342



Immunofluorescence analysis of methanol-fixed Hep G2, using PCCB antibody at 1: 500 dilution.

Background

The protein encoded by this gene is a subunit of the propionyl-CoA carboxylase (PCC) enzyme, which is involved in the catabolism of propionyl-CoA. PCC is a mitochondrial enzyme that probably acts as a dodecamer of six alpha subunits and six beta subunits. This gene encodes the beta subunit of PCC. Defects in this gene are a cause of propionic acidemia type II (PA-2). [provided by RefSeq]

Note: This product is for in vitro research use only