

ERP44 Antibody

Catalog No: #40273



Orders: [order@signalwayantibody.com](mailto:order@signalwayantibody.com)  
Support: [tech@signalwayantibody.com](mailto:tech@signalwayantibody.com)

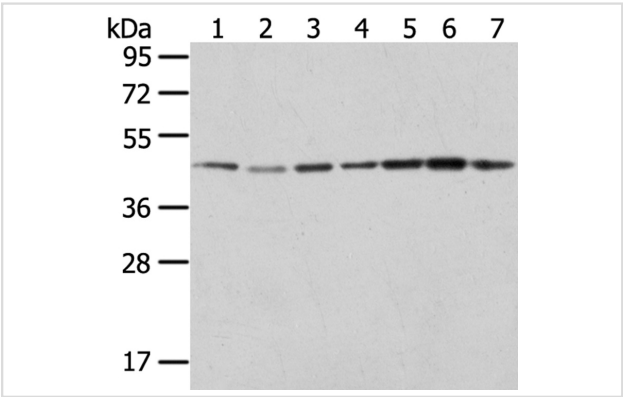
Description

Product Name	ERP44 Antibody
Host Species	Rabbit
Clonality	Polyclonal
Purification	Antigen affinity purification.
Applications	WB IHC
Species Reactivity	Hu
Specificity	The antibody detects endogenous levels of total ERP44 protein.
Immunogen Type	Peptide
Immunogen Description	Synthetic peptide of human endoplasmic reticulum protein 44
Target Name	ERP44
Other Names	PDIA10; TXNDC4
Accession No.	Swiss-Prot:Q9BS26Gene Accssion:NP_055866
Uniprot	Q9BS26
GeneID	23071;
SDS-PAGE MW	47KD
Concentration	1mg/ml
Formulation	Rabbit IgG in pH7.4 PBS, 0.05% NaN3, 40% Glycerol.
Storage	Store at -20°C

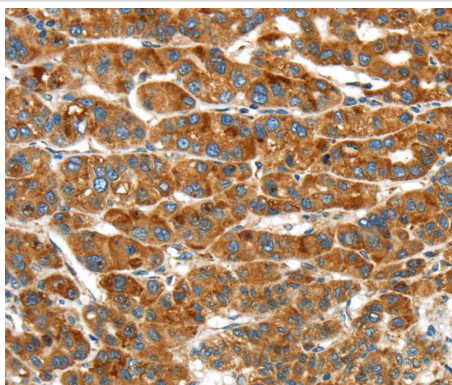
Application Details

Western blotting: 1:500-1:2000
Immunohistochemistry:1:25-1:100

Images



Gel: 8%SDS-PAGE  
Lysates (from left to right): Raji, A549, hela, hepg2, 231, K562 and A431 cell  
Amount of lysate: 40ug per lane  
Primary antibody: 1/200 dilution  
Secondary antibody dilution: 1/8000  
Exposure time: 10 seconds



Immunohistochemical analysis of paraffin-embedded Human liver cancer tissue using #40273 at dilution 1/20.

## Background

ERP44 is a 406 amino acid protein that contains one thioredoxin domain, a motif that participates in various redox reactions throughout the cell. Localized to the lumen of the endoplasmic reticulum (ER), TXNDC4 functions to inhibit the activity of IP3R-I (inositol 1,4,5-triphosphate receptor, type 1) within calcium channels. In addition, TXNDC4 is thought to regulate oxidative protein folding within the ER and may be involved in retaining proteins.

Note: This product is for in vitro research use only