

UBA1 antibody

Catalog No: #40278

Orders: order@signalwayantibody.comSupport: tech@signalwayantibody.com

Description

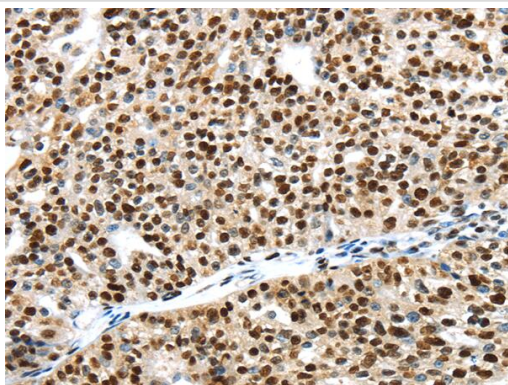
Product Name	UBA1 antibody
Host Species	Rabbit
Clonality	Polyclonal
Purification	Antigen affinity purification.
Applications	WB IHC ELISA
Species Reactivity	Hu Ms Rt
Specificity	The antibody detects endogenous levels of total UBTF protein.
Immunogen Type	Peptide
Immunogen Description	Synthetic peptide of human UBA1
Target Name	UBA1
Other Names	A1S9; A1ST; GXP1; UBE1; A1S9T; AMCX1; POC20; SMAX2; UBA1A; UBE1X; CFAP124
Accession No.	Swiss-Prot:P22314Gene ID:7317
Uniprot	P22314
GeneID	7317;
SDS-PAGE MW	118 kDa
Concentration	1mg/ml
Formulation	Rabbit IgG in pH7.4 PBS, 0.05% NaN ₃ , 40% Glycerol.
Storage	Store at -20°C

Application Details

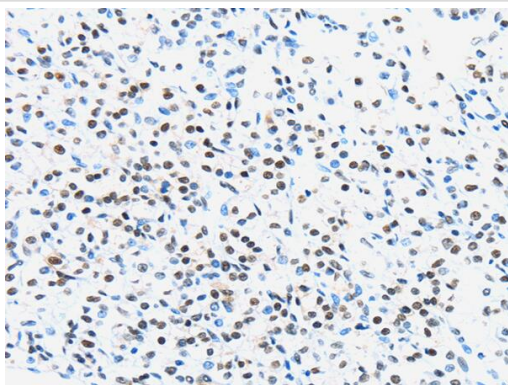
Western blotting: 1:500-2000

Immunohistochemistry:1:30-150

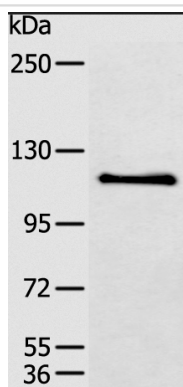
Images



The image is immunohistochemistry of paraffin-embedded Human breast cancer tissue using UBA1 Antibody at dilution 1/40.



The image is immunohistochemistry of paraffin-embedded Human prostate cancer tissue using UBA1 Antibody at dilution 1/40.



Gel: 6%SDS-PAGE Lysate: 40 μ g HepG2 cell lysate
Primary antibody: 1/400 dilution Secondary antibody: 1/8000 dilution

Background

The protein encoded by this gene catalyzes the first step in ubiquitin conjugation to mark cellular proteins for degradation. This gene complements an X-linked mouse temperature-sensitive defect in DNA synthesis, and thus may function in DNA repair. It is part of a gene cluster on chromosome Xp11.23. Alternatively spliced transcript variants that encode the same protein have been described.

Note: This product is for in vitro research use only