

MSI1 Antibody

Catalog No: #40281

Orders: order@signalwayantibody.comSupport: tech@signalwayantibody.com

Description

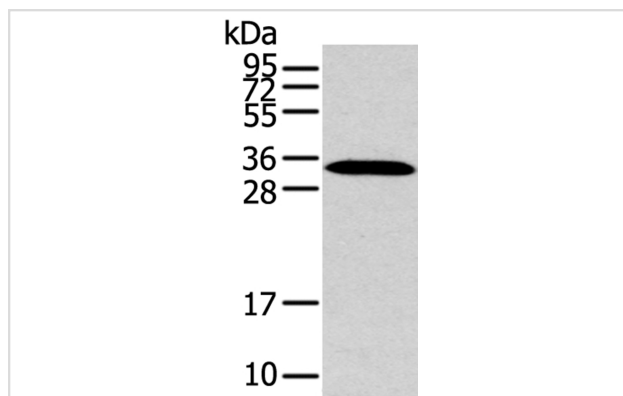
Product Name	MSI1 Antibody
Host Species	Rabbit
Clonality	Polyclonal
Purification	Antigen affinity purification.
Applications	WB IHC
Species Reactivity	Hu Ms
Specificity	The antibody detects endogenous levels of total MSI1 protein.
Immunogen Type	Peptide
Immunogen Description	Synthetic peptide of human musashi RNA-binding protein 1
Target Name	MSI1
Accession No.	Swiss-Prot:O43347 Gene Accssion:NP_002433
Uniprot	O43347
GeneID	4440;
SDS-PAGE MW	39KD
Concentration	1.9mg/ml
Formulation	Rabbit IgG in pH7.4 PBS, 0.05% NaN ₃ , 40% Glycerol.
Storage	Store at -20°C

Application Details

Western blotting: 1:500-1:2000

Immunohistochemistry:1:25-1:100

Images

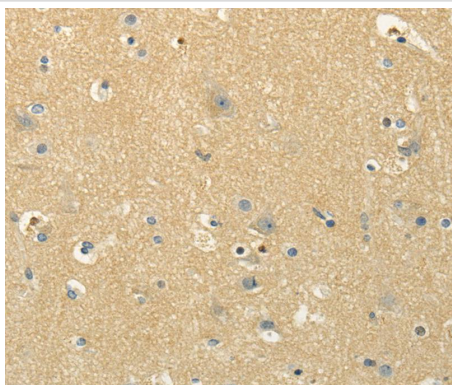


Gel: 12%SDS-PAGE

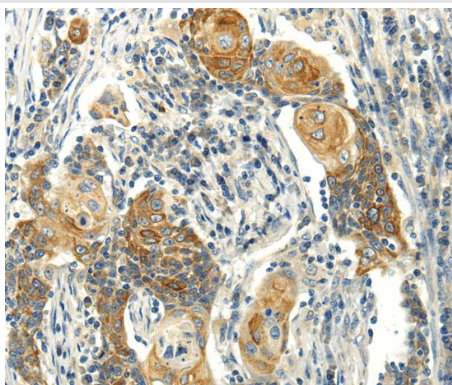
Lysate: 40ug Mouse brain tissuePrimary antibody: 1/200
dilution

Secondary antibody dilution: 1/8000

Exposure time: 5 minutes



Immunohistochemical analysis of paraffin-embedded Human brain tissue using #40281 at dilution 1/30.



Immunohistochemical analysis of paraffin-embedded Human cervical cancer tissue using #40281 at dilution 1/30.

Background

This gene encodes a protein containing two conserved tandem RNA recognition motifs. Similar proteins in other species function as RNA-binding proteins and play central roles in posttranscriptional gene regulation. Expression of this gene has been correlated with the grade of the malignancy and proliferative activity in gliomas and melanomas. A pseudogene for this gene is located on chromosome 11q13.

Note: This product is for in vitro research use only