

C21orf33 Antibody

Catalog No: #46938

Orders: order@signalwayantibody.comSupport: tech@signalwayantibody.com

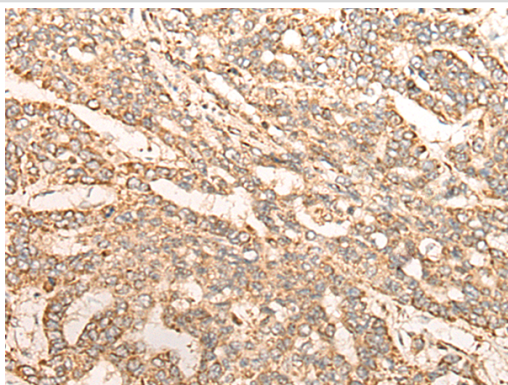
Description

Product Name	C21orf33 Antibody
Host Species	Rabbit
Clonality	Polyclonal
Purification	Antigen affinity purification
Applications	WB, IHC
Species Reactivity	Hu
Specificity	The antibody detects endogenous levels of total C21orf33 protein.
Immunogen Type	protein
Immunogen Description	Fusion protein of human C21orf33
Target Name	C21orf33
Other Names	ES1; HES1; KNPH; KNPI; GT335
Accession No.	Swiss-Prot#:P30042NCBI Gene ID:8209Gene Accssion:BC003587
Uniprot	P30042
GeneID	:8209
Calculated MW	28 kDa
Concentration	1mg/ml
Formulation	Rabbit IgG in pH7.4 PBS, 0.05% NaN ₃ , 40% Glycerol.
Storage	Store at -20C

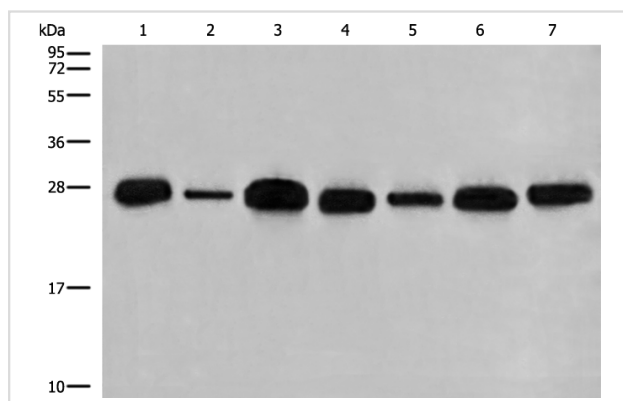
Application Details

Western blotting:1:500-2000Immunofluorescence:1: 20-100

Images



The image is immunohistochemistry of paraffin-embedded Human liver cancer tissue using 46938(C21orf33 Antibody) at dilution 1/35. (Original magnification: ?00)



Gel: 12%SDS-PAGE

Lysate: 40 µg, Lane 1-7: Rat heart tissue and Mouse skeletal muscle tissue, 293T, A549, Hela, K562 and HEPG2 cell lysates

Primary antibody: C21orf33 Antibody at dilution 1/400

Secondary antibody: Goat anti rabbit IgG at 1/8000 dilution

Exposure time: 1 second

Background

This gene encodes a potential mitochondrial protein that is a member of the DJ-1/Pfpl gene family. This protein is overexpressed in fetal Down syndrome brain. Alternate splicing results in multiple transcript variants.

Note: This product is for in vitro research use only