

CCP110 Antibody

Catalog No: #46945

Orders: order@signalwayantibody.comSupport: tech@signalwayantibody.com

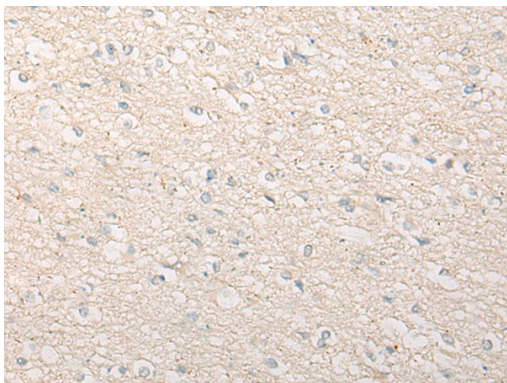
Description

Product Name	CCP110 Antibody
Host Species	Rabbit
Clonality	Polyclonal
Purification	Antigen affinity purification
Applications	IHC
Species Reactivity	Hu
Specificity	The antibody detects endogenous levels of total CCP110 protein.
Immunogen Type	peptide
Immunogen Description	Synthetic peptide of human CCP110
Target Name	CCP110
Other Names	CP110; Cep110
Accession No.	Swiss-Prot#:O43303 NCBI Gene ID:9738Gene Accssion:NP_055526
Uniprot	O43303
GeneID	9738;
Concentration	0.6mg/ml
Formulation	Rabbit IgG in pH7.4 PBS, 0.05% NaN ₃ , 40% Glycerol.
Storage	Store at -20C

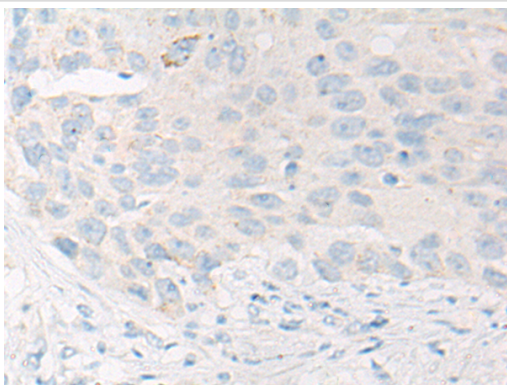
Application Details

Immunofluorescence:1: 20-100

Images



The image is immunohistochemistry of paraffin-embedded Human brain tissue using 46945(CCP110 Antibody) at dilution 1/20. (Original magnification: ?00)



The image is immunohistochemistry of paraffin-embedded Human esophagus cancer tissue using 46945(CCP110 Antibody) at dilution 1/20. (Original magnification: ?00)

Background

Necessary for centrosome duplication at different stages of procentriole formation. Acts as a key negative regulator of ciliogenesis in collaboration with CEP97 by capping the mother centriole thereby preventing cilia formation (PubMed:17719545?PubMed:17681131, PubMed:23486064). Also involved in promoting ciliogenesis. May play a role in the assembly of the mother centriole subdistal appendages (SDA) thereby effecting the fusion of recycling endosomes to basal bodies during cilia formation (By similarity). Required for correct spindle formation and has a role in regulating cytokinesis and genome stability via cooperation with CALM1 and CETN2 (PubMed:16760425).

Note: This product is for in vitro research use only