

## CREB3L2 Antibody

Catalog No: #46990

Orders: [order@signalwayantibody.com](mailto:order@signalwayantibody.com)Support: [tech@signalwayantibody.com](mailto:tech@signalwayantibody.com)

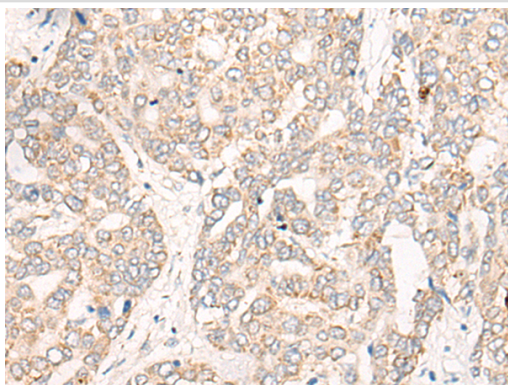
## Description

Product Name	CREB3L2 Antibody
Host Species	Rabbit
Clonality	Polyclonal
Purification	Antigen affinity purification
Applications	WB, IHC
Species Reactivity	Hu
Specificity	The antibody detects endogenous levels of total CREB3L2 protein.
Immunogen Type	protein
Immunogen Description	Full length fusion protein
Target Name	CREB3L2
Other Names	BBF2H7
Accession No.	Swiss-Prot#:Q70SY1NCBI Gene ID:64764Gene Accssion:BC063666
Uniprot	Q70SY1
GeneID	64764;
Calculated MW	57 kDa
Concentration	0.6mg/ml
Formulation	Rabbit IgG in pH7.4 PBS, 0.05% NaN <sub>3</sub> , 40% Glycerol.
Storage	Store at -20C

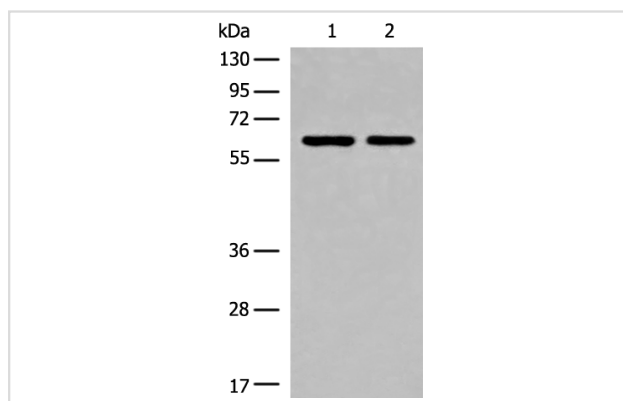
## Application Details

Western blotting:1:200-1000Immunofluorescence:1: 25-100

## Images



The image is immunohistochemistry of paraffin-embedded Human liver cancer tissue using 46990(CREB3L2 Antibody) at dilution 1/25. (Original magnification: ?00)



Gel: 8%SDS-PAGE

Lysate: 40 µg, Lane 1-2: HEPG2 and Hela cell lysates

Primary antibody: CREB3L2 Antibody at dilution 1/250

Secondary antibody: Goat anti rabbit IgG at 1/8000 dilution

Exposure time: 30 seconds

## Background

This gene encodes a member of the oasis bZIP transcription factor family. Members of this family can dimerize but form homodimers only. The encoded protein is a transcriptional activator. Translocations between this gene on chromosome 7 and the gene fused in sarcoma on chromosome 16 can be found in some tumors. Multiple transcript variants encoding different isoforms have been found for this gene.

Note: This product is for in vitro research use only